

# BOW BAHA

SPAIN

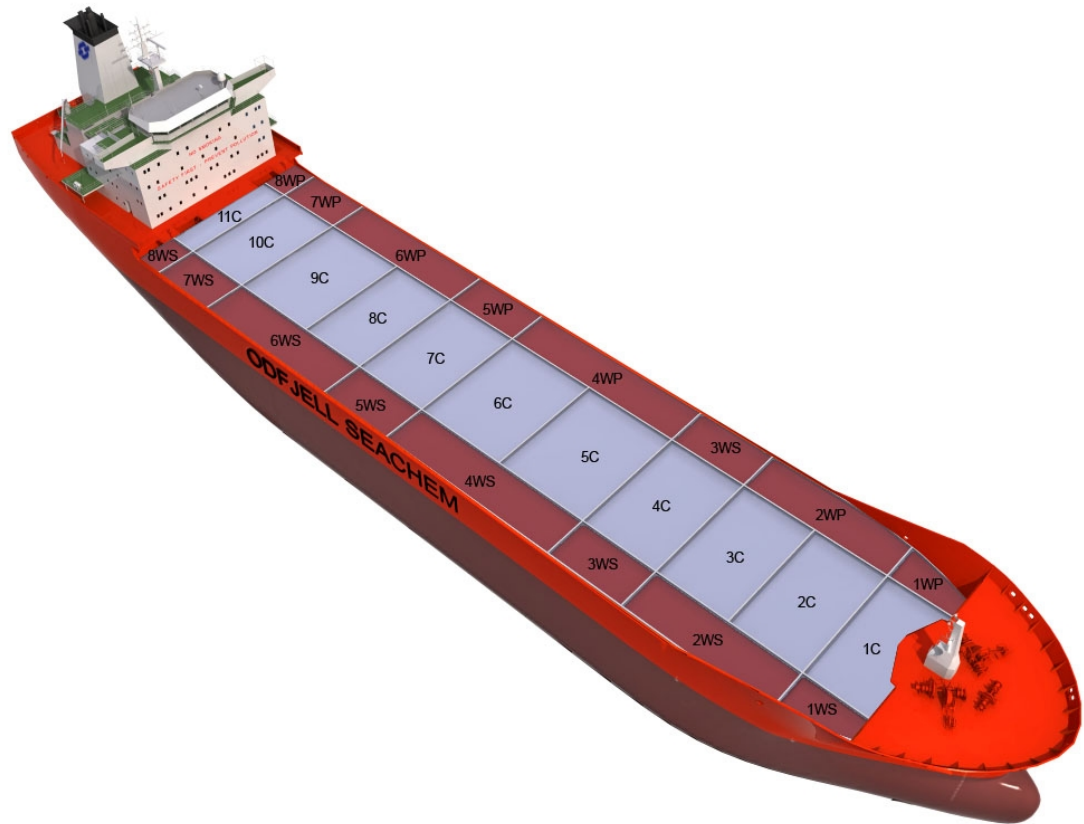
Chemical Tanker

Double/Single Hull: Single

Owner: Star Tankers AS

Technical Manager: Salhus Shipping AS

Ship	Built
BOW EAGLE	1988



## Main Ship Particulars

Flag	Bahamas
Classification	DNVER
# Tanks	25
L.O.A	172,40 m
Breadth	27,75 m
Draft S.Dwt	9,42 m
Keel to mast	44,20 m
Dwt (Summer)	24728 mt
Light ship	7835 mt
TPC S. Draft	38,8 t/cm
Speed	12,5 knots
N2 Capacity	5,0 m <sup>3</sup> /h
IGS System	1500,0 m <sup>3</sup> /h
PO Capacity	0,0 m <sup>3</sup>
Parallel body length	54,00 m
Laden Ballast	66,00 m
Norm Ballast	58,00 m
Num. of Segregations	25

Capacity Details (98%)	
St.Steel	19270 m <sup>3</sup>
Epoxy	
Zinc	12442 m <sup>3</sup>

Manifold Details	
S.draft to manifold	5,80 m
Rail to manifold	4,40 m
Bow to manifold	82,00 m

Tonnage Details	Gross	Net
International tonnage	15817 mt	9391 mt
Suez tonnage	16121 mt	13891 mt
Panama tonnage	13249 mt	13249 mt

Please note that figures above are given on average basis, Visit [www.odfjell.com](http://www.odfjell.com) for ship specific details

## Capacity of Cargo Tanks

Compartment	Volume 98%	St.St/ Coating	Tank Type	Pump Capacity	Heating Capacity
2WP	1150	Zinc	Cargo		100,00
2WS	1150	Zinc	Cargo		100,00
3WP	664	Zinc	Cargo		100,00
3WS	664	Zinc	Cargo		100,00
4C	1840	Stainless Steel	Cargo		100,00
4WP	1328	Zinc	Cargo		100,00
4WS	1328	Zinc	Cargo		100,00
5C	1840	Stainless Steel	Cargo		100,00
5WP	664	Zinc	Cargo		100,00
5WS	664	Zinc	Cargo		100,00
6C	1840	Stainless Steel	Cargo		100,00
6WP	1321	Zinc	Cargo		100,00
6WS	1321	Zinc	Cargo		100,00
7C	1840	Stainless Steel	Cargo		100,00
7WP	593	Zinc	Cargo		100,00
7WS	593	Zinc	Cargo		100,00
8C	1840	Stainless Steel	Cargo		100,00
9C	1840	Stainless Steel	Cargo		100,00
3C	1840	Stainless Steel	Cargo		100,00
11C	811	Stainless Steel	Cargo		100,00
10C	1840	Stainless Steel	Cargo		100,00
1C	1903	Stainless Steel	Cargo		100,00
1WP	500	Zinc	Cargo		100,00
1WS	500	Zinc	Cargo		100,00
2C	1840	Stainless Steel	Cargo		100,00
<b>Total Center Tanks:</b>	19270				
<b>Total Wing Tanks:</b>	12442				
<b>Grand Total:</b>	31713				

## Dead Weight Scale

