

BOW BALEARIA

P-CLASS

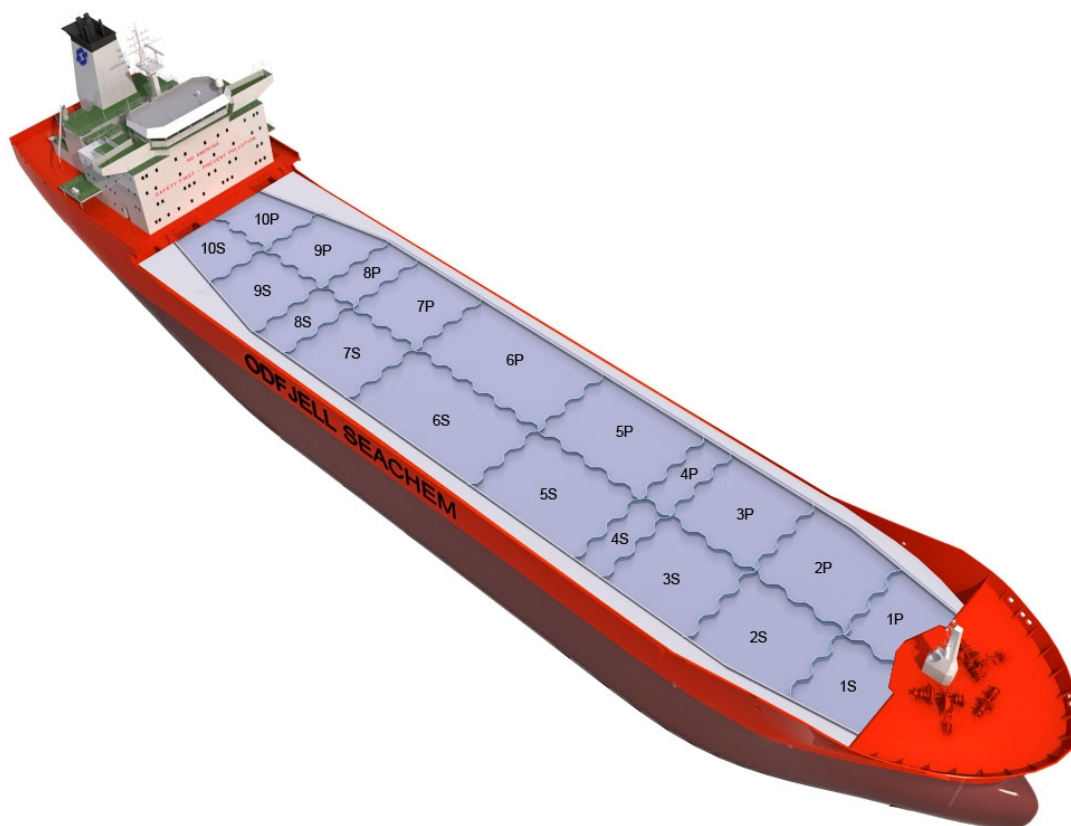
Chemical Tanker

Double/Single Hull: Double

Owner: Odfjell Chemical Tankers (Germany) GmbH.

Technical Manager: Ahrenkiel

Ship	Built
MULTITANK BRITANNIA	1996
MULTITANK BADENIA	1997
BOW BRACARIA	1997
BOW BRASILIA	1997
MULTITANK BATAVIA	1998



Main Ship Particulars

Flag	Liberia
Classification	GERML
# Tanks	20
L.O.A	99,99 m
Breadth	16,50 m
Draft S.Dwt	6,80 m
Keel to mast	35,60 m
Dwt (Summer)	5846 mt
Light ship	2489 mt
TPC S. Draft	14,6 t/cm
Speed	13,6 knots
N2 Capacity	600,0 m ³ /h
IGS System	0,0 m ³ /h
PO Capacity	5946,0 m ³
Parallel body length	46,84 m
Laden Ballast	59,00 m
Norm Ballast	48,00 m
Num. of Segregations	20

Capacity Details (98%)	
St.Steel	5948 m ³
Epoxy	
Zinc	

Manifold Details	
S.draft to manifold	3,62 m
Rail to manifold	3,15 m
Bow to manifold	50,71 m

Tonnage Details	Gross	Net
International tonnage	3726 mt	1673 mt
Suez tonnage	4082 mt	3021 mt
Panama tonnage		3189 mt

Please note that figures above are given on average basis, Visit www.odfjell.com for ship specific details

Capacity of Cargo Tanks

Compartment	Volume 98%	St.St/ Coating	Tank Type	Pump Capacity	Heating Capacity
1CS	162	Stainless Steel	Cargo		160,00
1CP	187	Stainless Steel	Cargo		160,00
2CS	304	Stainless Steel	Cargo		160,00
2CP	337	Stainless Steel	Cargo		160,00
3CS	379	Stainless Steel	Cargo		160,00
3CP	406	Stainless Steel	Cargo		160,00
4CS	103	Stainless Steel	Cargo		160,00
4CP	109	Stainless Steel	Cargo		160,00
5CS	385	Stainless Steel	Cargo		160,00
5CP	412	Stainless Steel	Cargo		160,00
6CS	538	Stainless Steel	Cargo		160,00
6CP	575	Stainless Steel	Cargo		160,00
7CS	361	Stainless Steel	Cargo		160,00
7CP	387	Stainless Steel	Cargo		160,00
8CS	153	Stainless Steel	Cargo		160,00
8CP	159	Stainless Steel	Cargo		160,00
9CS	230	Stainless Steel	Cargo		160,00
9CP	247	Stainless Steel	Cargo		160,00
10CS	248	Stainless Steel	Cargo		160,00
10CP	264	Stainless Steel	Cargo		160,00
Total Center Tanks:	5948				
Total Wing Tanks:	0				
Grand Total:	5948				

Dead Weight Scale

DEADWEIGHT SCALE

