

# BOW CARDINAL

**KVAERNER1**

Chemical Tanker

Double/Single Hull: Double

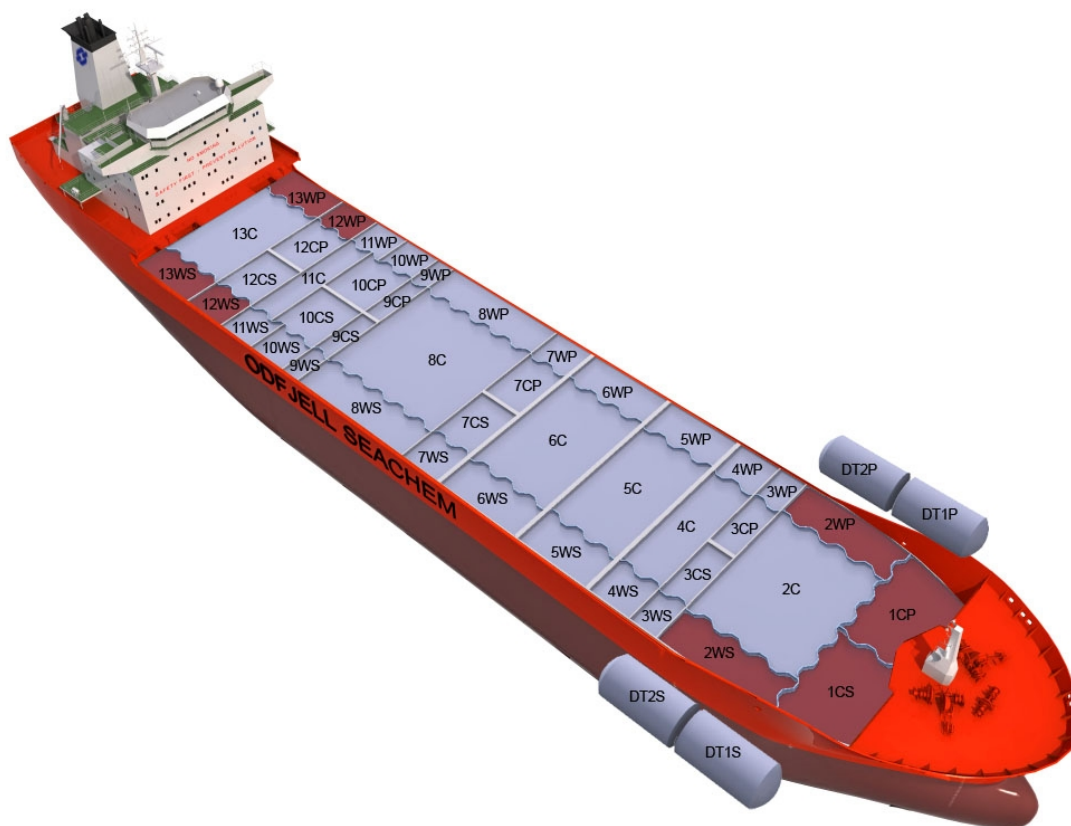
Owner: Odfjell Ch Tanker AS

Technical Manager: Odfjell Ship Management

Ship	Built
BOW FLOWER	1994
BOW RIYAD	1995
BOW MEKKA	1995
BOW CLIPPER	1995
BOW FAGUS	1995
BOW JUBAIL	1996
BOW CEDAR	1996
BOW FAITH	1997

### Main Ship Particulars

<b>Flag</b>	NIS
<b>Classification</b>	DNVER
<b># Tanks</b>	52
<b>L.O.A</b>	183,10 m
<b>Breadth</b>	32,20 m
<b>Draft S.Dwt</b>	10,72 m
<b>Keel to mast</b>	42,82 m
<b>Dwt (Summer)</b>	37446 mt
<b>Light ship</b>	11052 mt
<b>TPC S. Draft</b>	50,2 t/cm
<b>Speed</b>	14,3 knots
<b>N2 Capacity</b>	2000,0 m <sup>3</sup> /h
<b>IGS System</b>	0,0 m <sup>3</sup> /h
<b>PO Capacity</b>	5000,0 m <sup>3</sup>
<b>Parallel body length</b>	64,60 m
<b>Laden Ballast</b>	77,60 m
<b>Norm Ballast</b>	71,10 m
<b>Num. of Segregations</b>	52



Capacity Details (98%)	
<b>St.Steel</b>	33641 m <sup>3</sup>
<b>Epoxy</b>	
<b>Zinc</b>	7133 m <sup>3</sup>

Manifold Details	
<b>S.draft to manifold</b>	5,60 m
<b>Rail to manifold</b>	4,50 m
<b>Bow to manifold</b>	95,77 m

Tonnage Details	Gross	Net
<b>International tonnage</b>	23197 mt	12176 mt
<b>Suez tonnage</b>	23371 mt	20684 mt
<b>Panama tonnage</b>	23481 mt	17622 mt

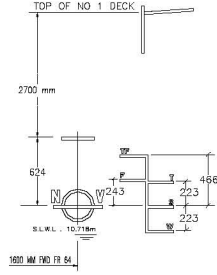
Please note that figures above are given on average basis, Visit [www.odfjell.com](http://www.odfjell.com) for ship specific details

## Capacity of Cargo Tanks

Compartment	Volume 98%	St.St/ Coating	Tank Type	Pump Capacity	Heating Capacity
1CP	1187	Zinc	Cargo		100,00
1CS	1186	Zinc	Cargo		100,00
1DP	153	Stainless Steel	Cargo		100,00
1DS	153	Stainless Steel	Cargo		100,00
11WP	606	Stainless Steel	Cargo		100,00
11WS	606	Stainless Steel	Cargo		100,00
12C	1274	Stainless Steel	Cargo		100,00
12WP	602	Stainless Steel	Cargo		100,00
12WS	602	Stainless Steel	Cargo		100,00
13CP	586	Stainless Steel	Cargo		100,00
13CS	586	Stainless Steel	Cargo		100,00
13WP	564	Zinc	Cargo		100,00
13WS	564	Zinc	Cargo		100,00
14C	2320	Stainless Steel	Cargo		100,00
14WP	861	Zinc	Cargo		100,00
14WS	861	Zinc	Cargo		100,00
7CP	290	Stainless Steel	Cargo		100,00
7CS	290	Stainless Steel	Cargo		100,00
7WP	302	Stainless Steel	Cargo		100,00
7WS	302	Stainless Steel	Cargo		100,00
10CS	346	Stainless Steel	Cargo		100,00
10WP	359	Stainless Steel	Cargo		100,00
10WS	359	Stainless Steel	Cargo		100,00
8CP	297	Stainless Steel	Cargo		100,00
8CS	297	Stainless Steel	Cargo		100,00
8WP	308	Stainless Steel	Cargo		100,00
8WS	308	Stainless Steel	Cargo		100,00
9C	3058	Stainless Steel	Cargo		100,00
9WP	1470	Stainless Steel	Cargo		100,00
9WS	1470	Stainless Steel	Cargo		100,00
11CP	586	Stainless Steel	Cargo		100,00
11CS	586	Stainless Steel	Cargo		100,00
10CP	346	Stainless Steel	Cargo		100,00
2C	2562	Stainless Steel	Cargo		100,00
2DP	147	Stainless Steel	Cargo		100,00
2DS	147	Stainless Steel	Cargo		100,00
2WP	956	Zinc	Cargo		100,00
2WS	956	Zinc	Cargo		100,00
5WP	301	Stainless Steel	Cargo		100,00
5WS	301	Stainless Steel	Cargo		100,00
4WP	1219	Stainless Steel	Cargo		100,00
4WS	1219	Stainless Steel	Cargo		100,00
5CP	290	Stainless Steel	Cargo		100,00
5CS	290	Stainless Steel	Cargo		100,00
3CP	290	Stainless Steel	Cargo		100,00
3CS	290	Stainless Steel	Cargo		100,00
3WP	292	Stainless Steel	Cargo		100,00
3WS	292	Stainless Steel	Cargo		100,00
4C	2547	Stainless Steel	Cargo		100,00
6C	2546	Stainless Steel	Cargo		100,00
6WP	1225	Stainless Steel	Cargo		100,00
6WS	1225	Stainless Steel	Cargo		100,00
<b>Total Center Tanks:</b>	22049				
<b>Total Wing Tanks:</b>	18126				
<b>Grand Total:</b>	40775				

# Dead Weight Scale

## Bow Cardinal



FREE BOARD METRES	DRAUGHT EXTREME METRES	DEADWEIGHT TONNES		SALT WATER			DRAUGHT EXTREME METRES
		F.W. 100 S.W.L.	S.W. 100 S.W.L.	TTC TONNES/CM	MINOR DECK TONNE METRES	FULL DECK TONNES	
		41000					
		40000					
		39000					
		38000		50.5	610	51000	
		37000			600	50000	11
		36000		50.0	590	49000	
		35000			580	48000	
		34000		49.5	570	47000	
		33000			560	46000	10
		32000		49.0	550	45000	
		31000			540	44000	
		30000		48.5	530	43000	
		29000			520	42000	9
		28000		48.0	510	41000	
		27000			500	40000	
		26000		47.5	490	39000	
		25000			480	38000	8
		24000		47.0	470	37000	
		23000			460	36000	
		22000			450	35000	7
		21000		46.5	440	34000	
		20000			430	33000	
		19000			420	32000	6
		18000			410	31000	
		17000			400	30000	
		16000			390	29000	5
		15000			380	28000	
		14000			370	27000	
		13000			360	26000	4
		12000			350	25000	
		11000			340	24000	
		10000			330	23000	3
		9000			320	22000	
		8000			310	21000	
		7000			300	20000	2
		6000			290	19000	
		5000			280	18000	
		4000			270	17000	
		3000			260	16000	
		2000			250	15000	
		1000			240	14000	
		0			230	13000	
					220	12000	
					210	11000	
					200	10000	
					190		
					180		
					170		
					160		
					150		
					140		
					130		
					120		
					110		
					100		
					90		
					80		
					70		
					60		
					50		
					40		
					30		
					20		
					10		
					0		

