

# BOW CEDAR

**KVAERNER1**

Chemical Tanker

Double/Single Hull: Double

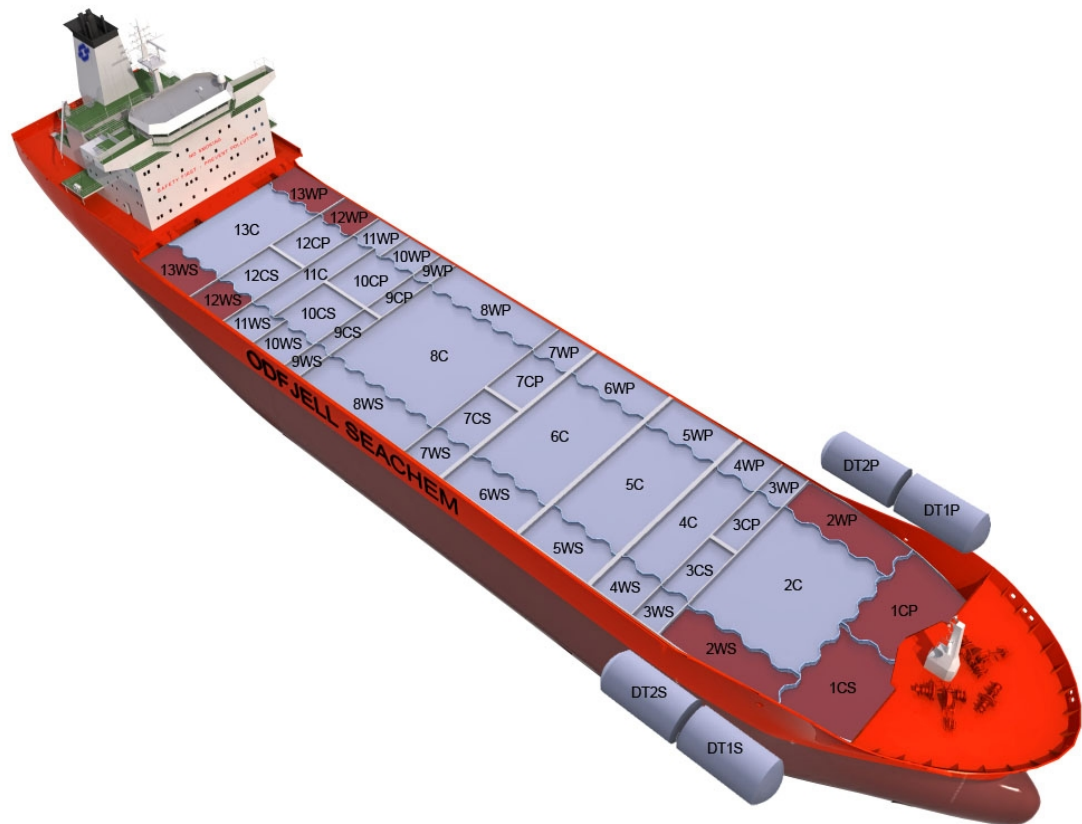
Owner: Odfjell Ch Tanker AS

Technical Manager: Odfjell Ship Management

Ship	Built
BOW FLOWER	1994
BOW RIYAD	1995
BOW MEKKA	1995
BOW CLIPPER	1995
BOW FAGUS	1995
BOW JUBAIL	1996
BOW FAITH	1997
BOW CARDINAL	1997

## Main Ship Particulars

<b>Flag</b>	NIS
<b>Classification</b>	DNVER
<b># Tanks</b>	52
<b>L.O.A</b>	183,10 m
<b>Breadth</b>	32,20 m
<b>Draft S.Dwt</b>	10,72 m
<b>Keel to mast</b>	43,36 m
<b>Dwt (Summer)</b>	37455 mt
<b>Light ship</b>	11043 mt
<b>TPC S. Draft</b>	50,2 t/cm
<b>Speed</b>	14,3 knots
<b>N2 Capacity</b>	2000,0 m <sup>3</sup> /h
<b>IGS System</b>	0,0 m <sup>3</sup> /h
<b>PO Capacity</b>	5000,0 m <sup>3</sup>
<b>Parallel body length</b>	64,60 m
<b>Laden Ballast</b>	77,60 m
<b>Norm Ballast</b>	71,10 m
<b>Num. of Segregations</b>	52



Capacity Details (98%)	
<b>St.Steel</b>	33634 m <sup>3</sup>
<b>Epoxy</b>	
<b>Zinc</b>	7133 m <sup>3</sup>

Manifold Details	
<b>S.draft to manifold</b>	5,60 m
<b>Rail to manifold</b>	4,50 m
<b>Bow to manifold</b>	93,00 m

Tonnage Details	Gross	Net
<b>International tonnage</b>	23197 mt	12176 mt
<b>Suez tonnage</b>	23371 mt	20684 mt
<b>Panama tonnage</b>	23481 mt	19325 mt

Please note that figures above are given on average basis, Visit [www.odfjell.com](http://www.odfjell.com) for ship specific details

## Capacity of Cargo Tanks

Compartment	Volume 98%	St.St/ Coating	Tank Type	Pump Capacity	Heating Capacity
1CP	1187	Zinc	Cargo		100,00
1CS	1186	Zinc	Cargo		100,00
1DP	153	Stainless Steel	Cargo		100,00
1DS	153	Stainless Steel	Cargo		100,00
10CP	346	Stainless Steel	Cargo		100,00
10CS	346	Stainless Steel	Cargo		100,00
10WP	359	Stainless Steel	Cargo		100,00
10WS	359	Stainless Steel	Cargo		100,00
11WP	602	Stainless Steel	Cargo		100,00
11WS	602	Stainless Steel	Cargo		100,00
12C	1274	Stainless Steel	Cargo		100,00
12WP	602	Stainless Steel	Cargo		100,00
12WS	602	Stainless Steel	Cargo		100,00
13CP	586	Stainless Steel	Cargo		100,00
13CS	586	Stainless Steel	Cargo		100,00
13WP	564	Zinc	Cargo		100,00
13WS	564	Zinc	Cargo		100,00
14C	2320	Stainless Steel	Cargo		100,00
14WP	861	Zinc	Cargo		100,00
14WS	861	Zinc	Cargo		100,00
11CP	586	Stainless Steel	Cargo		100,00
11CS	586	Stainless Steel	Cargo		100,00
2C	2562	Stainless Steel	Cargo		100,00
2DP	147	Stainless Steel	Cargo		100,00
2DS	147	Stainless Steel	Cargo		100,00
2WP	956	Zinc	Cargo		100,00
2WS	956	Zinc	Cargo		100,00
3CP	290	Stainless Steel	Cargo		100,00
3CS	290	Stainless Steel	Cargo		100,00
3WP	292	Stainless Steel	Cargo		100,00
3WS	292	Stainless Steel	Cargo		100,00
4C	2547	Stainless Steel	Cargo		100,00
4WP	1219	Stainless Steel	Cargo		100,00
4WS	1219	Stainless Steel	Cargo		100,00
5CP	290	Stainless Steel	Cargo		100,00
5CS	290	Stainless Steel	Cargo		100,00
6C	2546	Stainless Steel	Cargo		100,00
6WP	1225	Stainless Steel	Cargo		100,00
6WS	1225	Stainless Steel	Cargo		100,00
8CP	297	Stainless Steel	Cargo		100,00
8CS	297	Stainless Steel	Cargo		100,00
8WP	308	Stainless Steel	Cargo		100,00
8WS	308	Stainless Steel	Cargo		100,00
9C	3058	Stainless Steel	Cargo		100,00
9WP	1470	Stainless Steel	Cargo		100,00
9WS	1470	Stainless Steel	Cargo		100,00
7CP	290	Stainless Steel	Cargo		100,00
7CS	290	Stainless Steel	Cargo		100,00
7WP	302	Stainless Steel	Cargo		100,00
7WS	302	Stainless Steel	Cargo		100,00
5WP	301	Stainless Steel	Cargo		100,00
5WS	301	Stainless Steel	Cargo		100,00
<b>Total Center Tanks:</b>	22049				
<b>Total Wing Tanks:</b>	18118				
<b>Grand Total:</b>	40767				

# Dead Weight Scale

## Bow Cedar

