

# BOW CHAIN

## KVAERNER3

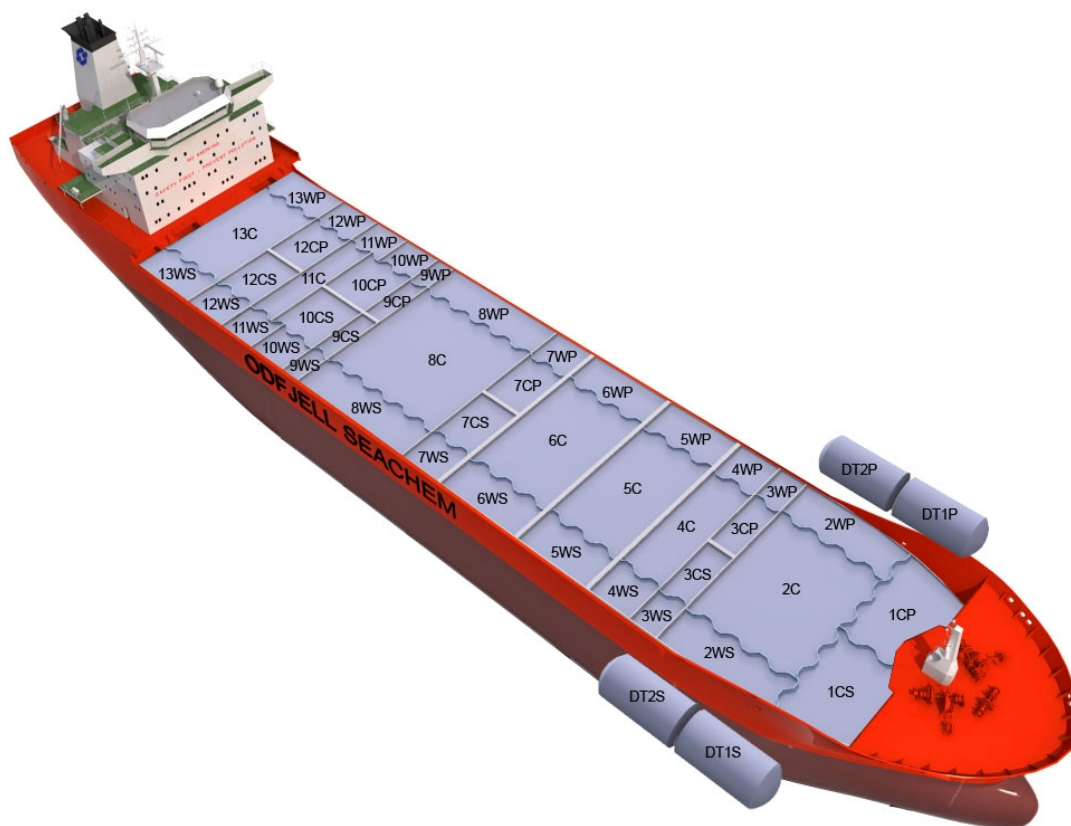
Chemical Tanker

Double/Single Hull: Double

Owner: Odfjell Asia II Pte

Technical Manager: Odfjell SE

Ship	Built
BOW FORTUNE	1999
BOW CENTURY	2000
BOW FAVOUR	2001
BOW FIRDA	2003



### Main Ship Particulars

<b>Flag</b>	NIS
<b>Classification</b>	DNVER
<b># Tanks</b>	47
<b>L.O.A</b>	183,10 m
<b>Breadth</b>	32,20 m
<b>Draft S.Dwt</b>	10,72 m
<b>Keel to mast</b>	42,80 m
<b>Dwt (Summer)</b>	37518 mt
<b>Light ship</b>	11031 mt
<b>TPC S. Draft</b>	50,5 t/cm
<b>Speed</b>	14,3 knots
<b>N2 Capacity</b>	2000,0 m <sup>3</sup> /h
<b>IGS System</b>	0,0 m <sup>3</sup> /h
<b>PO Capacity</b>	8046,0 m <sup>3</sup>
<b>Parallel body length</b>	64,60 m
<b>Laden Ballast</b>	77,60 m
<b>Norm Ballast</b>	71,10 m
<b>Num. of Segregations</b>	47

Capacity Details (98%)	
St.Steel	39822 m <sup>3</sup>
Epoxy	
Zinc	

Manifold Details	
S.draft to manifold	5,60 m
Rail to manifold	4,50 m
Bow to manifold	95,30 m

Tonnage Details	Gross	Net
International tonnage	23197 mt	11915 mt
Suez tonnage	23371 mt	20684 mt
Panama tonnage	23481 mt	19320 mt

Please note that figures above are given on average basis, Visit [www.odfjell.com](http://www.odfjell.com) for ship specific details

## Capacity of Cargo Tanks

Compartment	Volume 98%	St.St/ Coating	Tank Type	Pump Capacity	Heating Capacity
10CP	586	Stainless Steel	Cargo		100,00
10CS	586	Stainless Steel	Cargo		100,00
10WP	606	Stainless Steel	Cargo		100,00
10WS	606	Stainless Steel	Cargo		100,00
11WP	602	Stainless Steel	Cargo		100,00
11WS	602	Stainless Steel	Cargo		100,00
12CP	586	Stainless Steel	Cargo		100,00
12CS	586	Stainless Steel	Cargo		100,00
12WP	564	Stainless Steel	Cargo		100,00
12WS	564	Stainless Steel	Cargo		100,00
13C	2320	Stainless Steel	Cargo		100,00
13WP	861	Stainless Steel	Cargo		100,00
13WS	861	Stainless Steel	Cargo		100,00
1CP	1187	Stainless Steel	Cargo		100,00
1CS	1186	Stainless Steel	Cargo		100,00
1DP	153	Stainless Steel	Cargo		100,00
1DS	153	Stainless Steel	Cargo		100,00
2C	2562	Stainless Steel	Cargo		100,00
2DP	147	Stainless Steel	Cargo		100,00
2DS	147	Stainless Steel	Cargo		100,00
2WP	956	Stainless Steel	Cargo		100,00
2WS	956	Stainless Steel	Cargo		100,00
11C	1274	Stainless Steel	Cargo		100,00
3CP	290	Stainless Steel	Cargo		100,00
3CS	290	Stainless Steel	Cargo		100,00
3WP	292	Stainless Steel	Cargo		100,00
3WS	292	Stainless Steel	Cargo		100,00
4C	1210	Stainless Steel	Cargo		100,00
4WP	580	Stainless Steel	Cargo		100,00
4WS	580	Stainless Steel	Cargo		100,00
5C	1734	Stainless Steel	Cargo		100,00
6C	2373	Stainless Steel	Cargo		100,00
6WP	1137	Stainless Steel	Cargo		100,00
6WS	1137	Stainless Steel	Cargo		100,00
7CP	540	Stainless Steel	Cargo		100,00
7CS	540	Stainless Steel	Cargo		100,00
7WP	554	Stainless Steel	Cargo		100,00
7WS	554	Stainless Steel	Cargo		100,00
8C	3058	Stainless Steel	Cargo		100,00
8WP	1470	Stainless Steel	Cargo		100,00
8WS	1470	Stainless Steel	Cargo		100,00
9CP	346	Stainless Steel	Cargo		100,00
9CS	346	Stainless Steel	Cargo		100,00
9WP	359	Stainless Steel	Cargo		100,00
9WS	359	Stainless Steel	Cargo		100,00
5WP	833	Stainless Steel	Cargo		100,00
5WS	833	Stainless Steel	Cargo		100,00
<b>Total Center Tanks:</b>	21598				
<b>Total Wing Tanks:</b>	17624				
<b>Grand Total:</b>	39822				

# Dead Weight Scale

## Bow Chain

FREE BOARD METRES	DRAUGHT EXTREME METRES	DEADWEIGHT TONNES		SALT WATER			DRAUGHT EXTREME METRES
		F.W. 1.025	S.W. 1.025	TPC TONNES/CM	WATER TO GUNWALE TONNES	FULL DISCHARGE TONNES	
		41000					
		40000				51000	
3	11	39000		50.5	610	50000	11
		38000			600	49000	
		37000		50.0	590	48000	
		36000			580	47000	
		35000		49.5	570	46000	
4	10	34000		49.0	560	45000	10
		33000			550	44000	
		32000		48.5	540	43000	
		31000			530	42000	
		30000		48.0	520	41000	
5	9	29000		47.5	510	40000	9
		28000			500	39000	
		27000			490	38000	
		26000		47.0	480	37000	
6	8	25000			470	36000	8
		24000			460	35000	
		23000			450	34000	
		22000		46.5	440	33000	
		21000			430	32000	
7	7	20000			420	31000	7
		19000			410	30000	
		18000			400	29000	
		17000			390	28000	
		16000		46.0	380	27000	
8	6	15000			370	26000	6
		14000			360	25000	
		13000			350	24000	
		12000			340	23000	
		11000			330	22000	
9	5	10000			320	21000	5
		9000		45.5	310	20000	
		8000			300	19000	
		7000			290	18000	
10	4	6000			280	17000	4
		5000		45.0	270	16000	
		4000			260	15000	
		3000			250	14000	
		2000		44.5	240	13000	
11	3	1000			230	12000	3
		0		44.0	220	11000	
				43.5	210	10000	
	2				200		2

Lightship 10880 tonnes

Draft 2.664 m