

# NCC DAMMAM

## SUDAIR

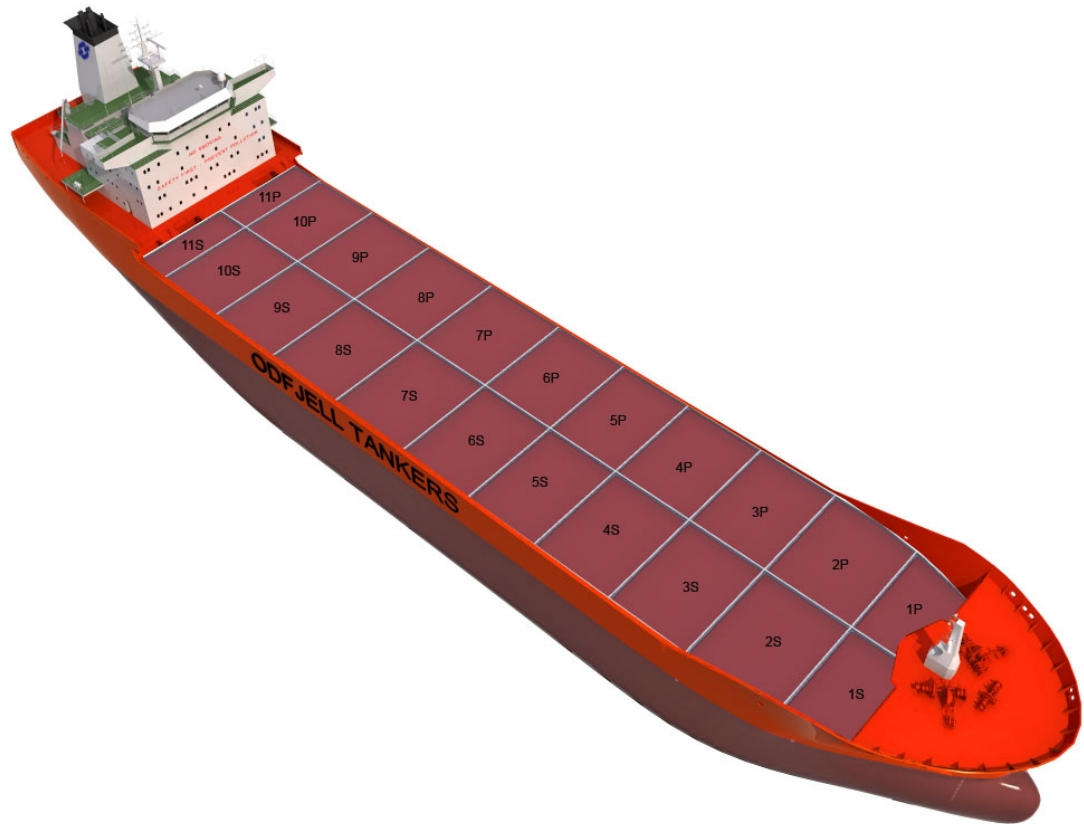
Chemical Tanker

Double/Single Hull: Double

Owner: National Chemical C.

Technical Manager: MSML

Ship	Built
NCC SUDAIR	2007
NCC HAIEL	2008



### Main Ship Particulars

Flag	Panama
Classification	DNVER
# Tanks	22
L.O.A	183,02 m
Breadth	32,23 m
Draft S.Dwt	12,22 m
Keel to mast	50,58 m
Dwt (Summer)	45965 mt
Light ship	10238 mt
TPC S. Draft	52,3 t/cm
Speed	14,2 knots
N2 Capacity	1000,0 m <sup>3</sup> /h
IGS System	4000,0 m <sup>3</sup> /h
PO Capacity	0,0 m <sup>3</sup>
Parallel body length	85,00 m
Laden Ballast	96,84 m
Norm Ballast	83,10 m
Num. of Segregations	22

Capacity Details (98%)	
St.Steel	
Epoxy	
Zinc	53313 m <sup>3</sup>

Manifold Details	
S.draft to manifold	9,28 m
Rail to manifold	4,30 m
Bow to manifold	96,44 m

Tonnage Details	Gross	Net
International tonnage	29575 mt	12054 mt
Suez tonnage	31138 mt	26187 mt
Panama tonnage		29575 mt

Please note that figures above are given on average basis, Visit [www.odfjell.com](http://www.odfjell.com) for ship specific details

Capacity of Cargo Tanks					
Compartment	Volume 98%	St.St/ Coating	Tank Type	Pump Capacity	Heating Capacity
1CP	1682	Zinc	Cargo		80,00
1CS	1682	Zinc	Cargo		80,00
2CP	2420	Zinc	Cargo		80,00
2CS	2420	Zinc	Cargo		80,00
3CP	2758	Zinc	Cargo		80,00
3CS	2758	Zinc	Cargo		80,00
4CP	2796	Zinc	Cargo		80,00
4CS	2796	Zinc	Cargo		80,00
5CP	2799	Zinc	Cargo		80,00
5CS	2799	Zinc	Cargo		80,00
6CP	2799	Zinc	Cargo		80,00
6CS	2799	Zinc	Cargo		80,00
7CP	2799	Zinc	Cargo		80,00
7CS	2799	Zinc	Cargo		80,00
8CP	2798	Zinc	Cargo		80,00
8CS	2798	Zinc	Cargo		80,00
9CP	2709	Zinc	Cargo		80,00
9CS	2709	Zinc	Cargo		80,00
10CP	2247	Zinc	Cargo		80,00
10CS	2247	Zinc	Cargo		80,00
11CP	850	Zinc	Cargo		80,00
11CS	850	Zinc	Cargo		80,00
<b>Total Center Tanks:</b>	53313				
<b>Total Wing Tanks:</b>	0				
<b>Grand Total:</b>	53313				

# Dead Weight Scale

