

# BOW DE FENG

**Fukuoka 04**

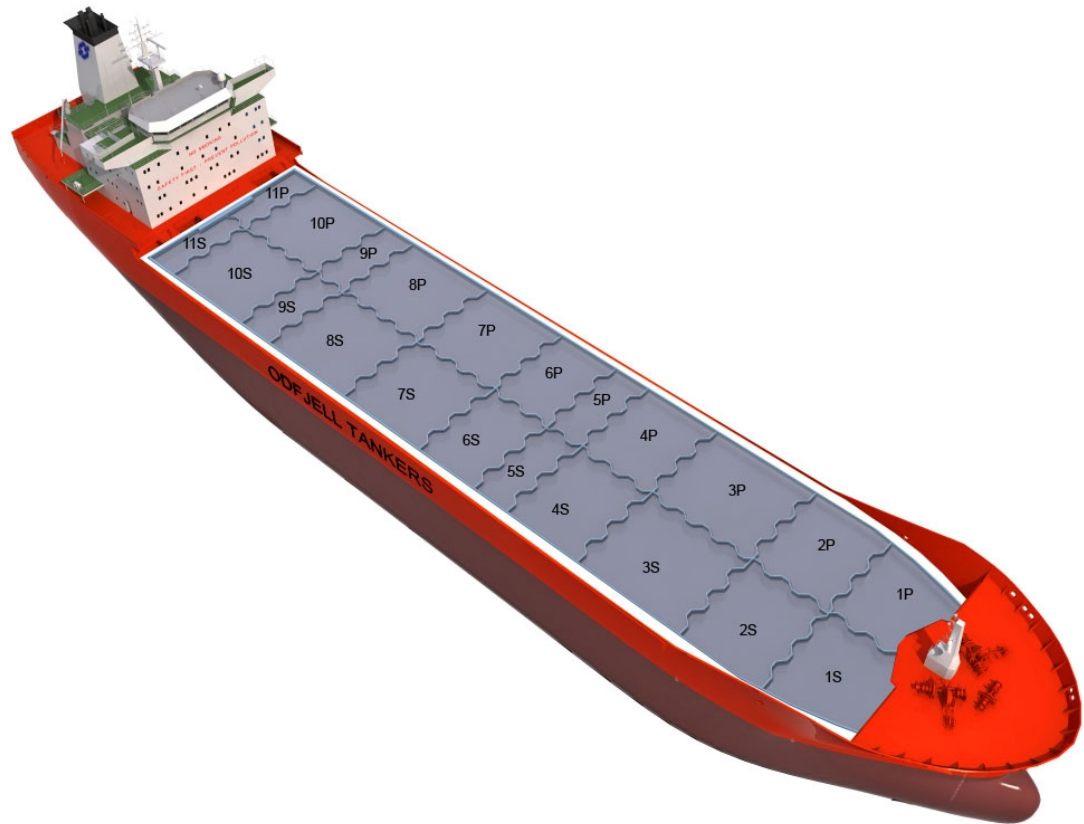
Chemical Tanker

Double/Single Hull: Double

Owner: New Rich Shipping Ltd.

Technical Manager: Fleet Management Limited

Ship	Built
BOW DE JIN	1999
BOW ASIA	2004
BOW SINGAPORE	2004
BOW LIMA	2007



Main Ship Particulars	
Flag	Hong Kong
Classification	NKK
# Tanks	22
L.O.A	123,17 m
Breadth	20,28 m
Draft S.Dwt	8,75 m
Keel to mast	33,82 m
Dwt (Summer)	12514 mt
Light ship	3385 mt
TPC S. Draft	16,4 t/cm
Speed	12,5 knots
N2 Capacity	
IGS System	0,0 m <sup>3</sup> /h
PO Capacity	
Parallel body length	
Laden Ballast	64,00 m
Norm Ballast	51,15 m
Num. of Segregations	22

Capacity Details (98%)	
St.Steel	13300 m <sup>3</sup>
Epoxy	
Zinc	

Manifold Details	
S.draft to manifold	
Rail to manifold	
Bow to manifold	61,57 m

Tonnage Details	Gross	Net
International tonnage	6850 mt	3850 mt
Suez tonnage	6435 mt	
Panama tonnage	5804 mt	

Please note that figures above are given on average basis, Visit [www.odfjell.com](http://www.odfjell.com) for ship specific details

## Capacity of Cargo Tanks

Compartment	Volume 98%	St.St/ Coating	Tank Type	Pump Capacity	Heating Capacity
1CP	472	Stainless Steel	Cargo		100,00
1CS	472	Stainless Steel	Cargo		100,00
2CP	578	Stainless Steel	Cargo		100,00
2CS	586	Stainless Steel	Cargo		100,00
3CP	872	Stainless Steel	Cargo		100,00
3CS	879	Stainless Steel	Cargo		100,00
4CP	664	Stainless Steel	Cargo		100,00
4CS	672	Stainless Steel	Cargo		100,00
5CP	333	Stainless Steel	Cargo		100,00
5CS	333	Stainless Steel	Cargo		100,00
6CP	556	Stainless Steel	Cargo		100,00
6CS	556	Stainless Steel	Cargo		100,00
7CP	831	Stainless Steel	Cargo		100,00
7CS	838	Stainless Steel	Cargo		100,00
8CP	886	Stainless Steel	Cargo		100,00
9CS	331	Stainless Steel	Cargo		100,00
9CP	331	Stainless Steel	Cargo		100,00
10CP	844	Stainless Steel	Cargo		100,00
8CS	894	Stainless Steel	Cargo		100,00
10CS	852	Stainless Steel	Cargo		100,00
11CP	260	Stainless Steel	Cargo		100,00
11CS	260	Stainless Steel	Cargo		100,00
<b>Total Center Tanks:</b>	13300				
<b>Total Wing Tanks:</b>	0				
<b>Grand Total:</b>	13300				

## Dead Weight Scale

