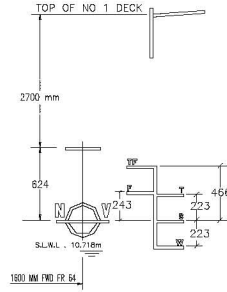


Capacity of Cargo Tanks

Compartment	Volume 98%	St.St/ Coating	Tank Type	Pump Capacity	Heating Capacity
10WP	359	Stainless Steel	Cargo		100,00
10WS	359	Stainless Steel	Cargo		100,00
11WP	606	Stainless Steel	Cargo		100,00
11WS	606	Stainless Steel	Cargo		100,00
12WP	602	Stainless Steel	Cargo		100,00
12WS	602	Stainless Steel	Cargo		100,00
13WP	564	Zinc	Cargo		100,00
13WS	564	Zinc	Cargo		100,00
14WP	861	Zinc	Cargo		100,00
14WS	861	Zinc	Cargo		100,00
2WP	956	Zinc	Cargo		100,00
2WS	956	Zinc	Cargo		100,00
3WP	292	Stainless Steel	Cargo		100,00
3WS	292	Stainless Steel	Cargo		100,00
4WP	1219	Stainless Steel	Cargo		100,00
4WS	1219	Stainless Steel	Cargo		100,00
5WP	301	Stainless Steel	Cargo		100,00
5WS	301	Stainless Steel	Cargo		100,00
6WP	1225	Stainless Steel	Cargo		100,00
6WS	1225	Stainless Steel	Cargo		100,00
7WP	302	Stainless Steel	Cargo		100,00
7WS	302	Stainless Steel	Cargo		100,00
8WP	308	Stainless Steel	Cargo		100,00
8WS	308	Stainless Steel	Cargo		100,00
9WP	1470	Stainless Steel	Cargo		100,00
9WS	1470	Stainless Steel	Cargo		100,00
10CP	346	Stainless Steel	Cargo		100,00
10CS	346	Stainless Steel	Cargo		100,00
11CP	586	Stainless Steel	Cargo		100,00
11CS	586	Stainless Steel	Cargo		100,00
12C	1274	Stainless Steel	Cargo		100,00
13CP	586	Stainless Steel	Cargo		100,00
13CS	586	Stainless Steel	Cargo		100,00
14C	2320	Stainless Steel	Cargo		100,00
1CP	1187	Zinc	Cargo		100,00
1CS	1186	Zinc	Cargo		100,00
2C	2562	Stainless Steel	Cargo		100,00
3CP	290	Stainless Steel	Cargo		100,00
3CS	290	Stainless Steel	Cargo		100,00
4C	2547	Stainless Steel	Cargo		100,00
5CP	290	Stainless Steel	Cargo		100,00
5CS	290	Stainless Steel	Cargo		100,00
6C	2546	Stainless Steel	Cargo		100,00
7CP	290	Stainless Steel	Cargo		100,00
7CS	290	Stainless Steel	Cargo		100,00
8CP	297	Stainless Steel	Cargo		100,00
8CS	297	Stainless Steel	Cargo		100,00
9C	3058	Stainless Steel	Cargo		100,00
1DP	153	Stainless Steel	Cargo		100,00
1DS	153	Stainless Steel	Cargo		100,00
2DP	147	Stainless Steel	Cargo		100,00
2DS	147	Stainless Steel	Cargo		100,00
Total Center Tanks:	22049				
Total Wing Tanks:	18126				
Grand Total:	40775				

Dead Weight Scale

Bow Faith



FREE BOARD METRES	DRAUGHT EXTREME METRES	DEADWEIGHT TONNES		SALT WATER		DRAUGHT EXTREME METRES
		F.W. 1,000 1,000 1,000	S.W. 1,025 1,025 1,025	TPC TONNES/CN	WATER TO DISPLACE TONNES ALL DISPLACEMENT TONNES	
		41000				
		40000			51000	
3	11	39000	50.5	610	50000	11
		38000		600	49000	
		37000	50.0	590	48000	
		36000		580	47000	
		35000	49.5	570	46000	
4	10	34000	49.0	560	45000	10
		33000		550	44000	
		32000	48.5	540	43000	
		31000		530	42000	
		30000	48.0	520	41000	
5	9	29000	47.5	510	40000	9
		28000		500	39000	
		27000	47.0	490	38000	
		26000		480	37000	
6	8	25000	46.5	470	36000	8
		24000		460	35000	
		23000	46.0	450	34000	
		22000		440	33000	
		21000	45.5	430	32000	
7	7	20000	45.0	420	31000	7
		19000		410	30000	
		18000	44.5	400	29000	
		17000		390	28000	
		16000	44.0	380	27000	
8	6	15000	43.5	370	26000	6
		14000		360	25000	
		13000	43.0	350	24000	
		12000		340	23000	
9	5	11000	42.5	330	22000	5
		10000		320	21000	
		9000	42.0	310	20000	
		8000		300	19000	
		7000	41.5	290	18000	
10	4	6000	41.0	280	17000	4
		5000		270	16000	
		4000	40.5	260	15000	
		3000		250	14000	
		2000	40.0	240	13000	
11	3	1000	39.5	230	12000	3
		0		220	11000	
			39.0	210	10000	
	2					2

