

# BOW FLORA

**KVAERNER2**

Chemical Tanker

Double/Single Hull: Double

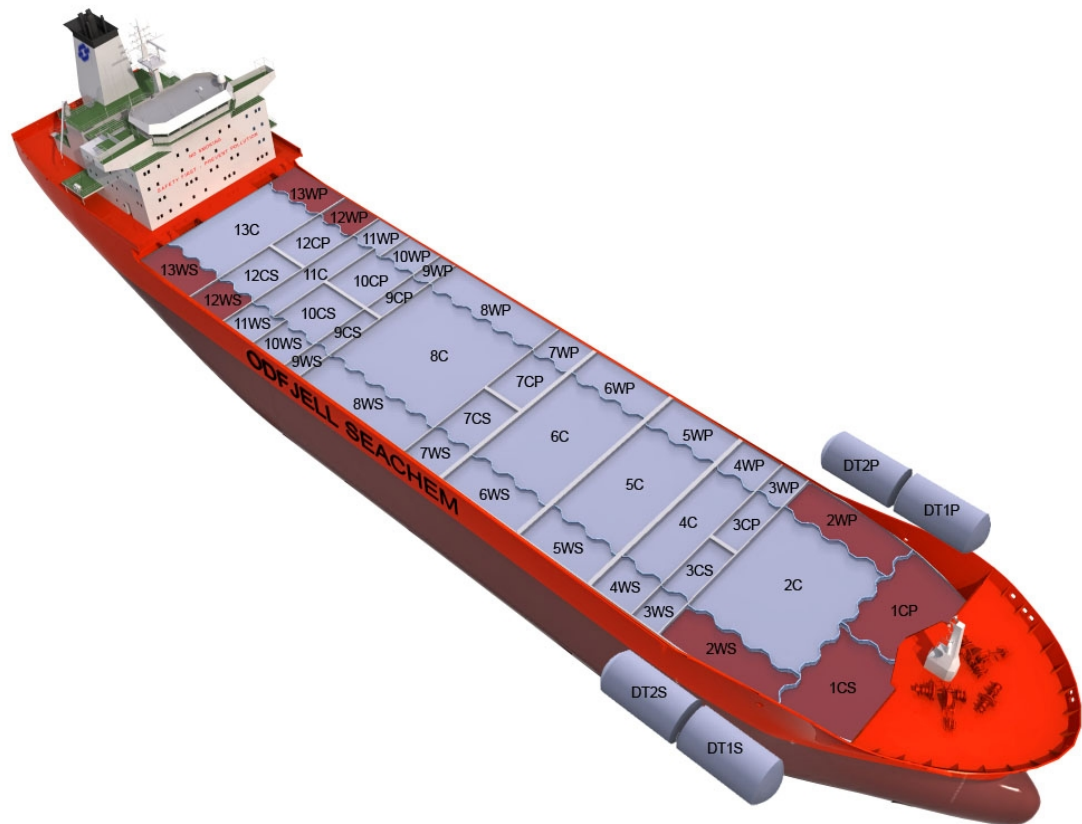
Owner: Odfjell Asia II Pte

Technical Manager: Odfjell Ship Management

Ship	Built
BOW CECIL	1998

## Main Ship Particulars

Flag	NIS
Classification	DNVER
# Tanks	47
L.O.A	183,10 m
Breadth	32,20 m
Draft S.Dwt	10,72 m
Keel to mast	42,82 m
Dwt (Summer)	37369 mt
Light ship	11129 mt
TPC S. Draft	50,2 t/cm
Speed	14,3 knots
N2 Capacity	2000,0 m <sup>3</sup> /h
IGS System	0,0 m <sup>3</sup> /h
PO Capacity	8044,0 m <sup>3</sup>
Parallel body length	64,60 m
Laden Ballast	77,60 m
Norm Ballast	71,10 m
Num. of Segregations	47



Capacity Details (98%)	
St.Steel	32689 m <sup>3</sup>
Epoxy	
Zinc	7133 m <sup>3</sup>

Manifold Details	
S.draft to manifold	5,60 m
Rail to manifold	4,50 m
Bow to manifold	95,30 m

Tonnage Details	Gross	Net
International tonnage	23206 mt	11915 mt
Suez tonnage	23386 mt	20699 mt
Panama tonnage		19334 mt

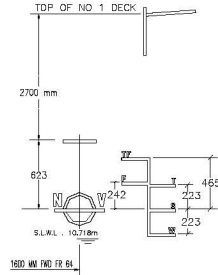
Please note that figures above are given on average basis, Visit [www.odfjell.com](http://www.odfjell.com) for ship specific details

## Capacity of Cargo Tanks

Compartment	Volume 98%	St.St/ Coating	Tank Type	Pump Capacity	Heating Capacity
11C	1274	Stainless Steel	Cargo		100,00
11WP	602	Stainless Steel	Cargo		100,00
11WS	602	Stainless Steel	Cargo		100,00
12CP	586	Stainless Steel	Cargo		100,00
12CS	586	Stainless Steel	Cargo		100,00
10CP	586	Stainless Steel	Cargo		100,00
10CS	586	Stainless Steel	Cargo		100,00
10WP	606	Stainless Steel	Cargo		100,00
10WS	606	Stainless Steel	Cargo		100,00
13WP	861	Zinc	Cargo		100,00
13WS	861	Zinc	Cargo		100,00
1CP	1187	Zinc	Cargo		100,00
1CS	1186	Zinc	Cargo		100,00
1DP	153	Stainless Steel	Cargo		100,00
1DS	153	Stainless Steel	Cargo		100,00
7CP	540	Stainless Steel	Cargo		100,00
7CS	540	Stainless Steel	Cargo		100,00
7WP	554	Stainless Steel	Cargo		100,00
7WS	554	Stainless Steel	Cargo		100,00
5WP	833	Stainless Steel	Cargo		100,00
5WS	833	Stainless Steel	Cargo		100,00
6C	2373	Stainless Steel	Cargo		100,00
6WP	1137	Stainless Steel	Cargo		100,00
6WS	1137	Stainless Steel	Cargo		100,00
8C	3058	Stainless Steel	Cargo		100,00
8WP	1470	Stainless Steel	Cargo		100,00
8WS	1470	Stainless Steel	Cargo		100,00
9CP	346	Stainless Steel	Cargo		100,00
9CS	346	Stainless Steel	Cargo		100,00
9WP	359	Stainless Steel	Cargo		100,00
9WS	359	Stainless Steel	Cargo		100,00
12WP	564	Zinc	Cargo		100,00
12WS	564	Zinc	Cargo		100,00
13C	2320	Stainless Steel	Cargo		100,00
2C	2562	Stainless Steel	Cargo		100,00
2DP	147	Stainless Steel	Cargo		100,00
2DS	147	Stainless Steel	Cargo		100,00
2WP	956	Zinc	Cargo		100,00
2WS	956	Zinc	Cargo		100,00
3CP	290	Stainless Steel	Cargo		100,00
3CS	290	Stainless Steel	Cargo		100,00
3WP	292	Stainless Steel	Cargo		100,00
3WS	292	Stainless Steel	Cargo		100,00
4C	1210	Stainless Steel	Cargo		100,00
4WP	580	Stainless Steel	Cargo		100,00
4WS	580	Stainless Steel	Cargo		100,00
5C	1734	Stainless Steel	Cargo		100,00
<b>Total Center Tanks:</b>	21598				
<b>Total Wing Tanks:</b>	17624				
<b>Grand Total:</b>	39822				

# Dead Weight Scale

## Bow Flora



FREE BOARD METRES	DRAUGHT EXTREME METRES	DEADWEIGHT TONNES S.W.	SALT WATER			DRAUGHT EXTREME METRES
			F.W. 1025 TONNES/CM	PC TONNES/CM	FULL DISPLACEMENT TONNES	
		41000				
		40000				
		39000				
3	11	38000	50.5	610	51000	11
		37000		600	49000	
		36000	50.0	590	48000	
		35000		580	47000	
		34000	49.5	570	46000	
4	10	33000	49.0	560	45000	10
		32000		550	44000	
		31000	48.5	540	43000	
		30000		530	42000	
		29000	48.0	520	41000	
5	9	28000	47.5	510	40000	9
		27000		500	39000	
		26000		500	38000	
		25000	47.0	490	37000	
6	8	24000	47.0	490	36000	8
		23000		480	35000	
		22000		480	34000	
		21000	46.5	470	33000	
		20000		470	32000	
7	7	19000	46.5	470	31000	7
		18000		470	30000	
		17000		470	29000	
		16000		470	28000	
		15000	46.0	460	27000	
8	6	14000	46.0	460	26000	6
		13000		460	25000	
		12000		460	24000	
		11000		460	23000	
		10000		460	22000	
9	5	9000		450	21000	5
		8000	45.5	450	20000	
		7000		450	19000	
		6000		450	18000	
10	4	5000		440	17000	4
		4000	45.0	440	16000	
		3000		440	15000	
		2000	44.5	430	14000	
		1000		420	13000	
11	3	0	44.0	420	12000	3
				410	11000	
			43.5	400	10000	
	2					2

