

BOW FLOWER

KVAERNER1

Chemical Tanker

Double/Single Hull: Double

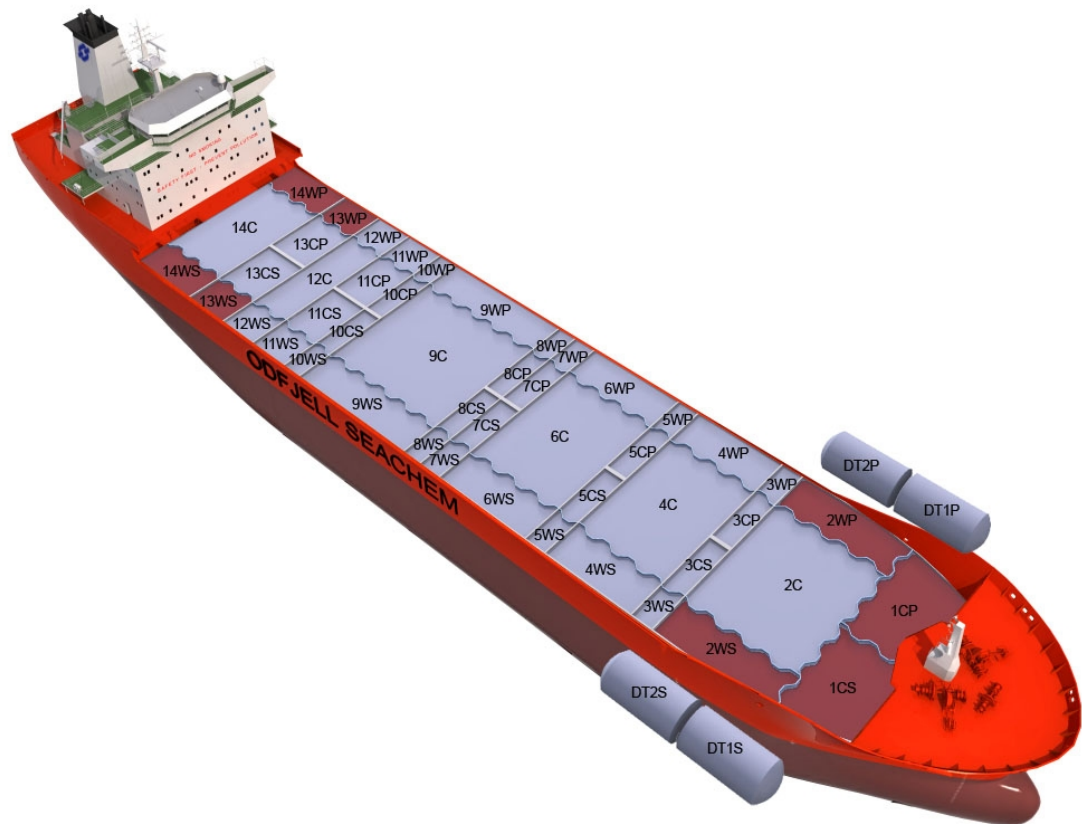
Owner: Odfjell Ch Tanker AS

Technical Manager: Odfjell SE

Ship	Built
BOW RIYAD	1995
BOW MEKKA	1995
BOW CLIPPER	1995
BOW FAGUS	1995
BOW JUBAIL	1996
BOW CEDAR	1996
BOW FAITH	1997
BOW CARDINAL	1997

Main Ship Particulars

Flag	NIS
Classification	DNVER
# Tanks	52
L.O.A	183,10 m
Breadth	32,20 m
Draft S.Dwt	10,72 m
Keel to mast	42,79 m
Dwt (Summer)	37221 mt
Light ship	11277 mt
TPC S. Draft	50,2 t/cm
Speed	14,3 knots
N2 Capacity	2000,0 m ³ /h
IGS System	0,0 m ³ /h
PO Capacity	5000,0 m ³
Parallel body length	64,60 m
Laden Ballast	77,60 m
Norm Ballast	71,10 m
Num. of Segregations	52



Capacity Details (98%)	
St.Steel	33576 m ³
Epoxy	
Zinc	7184 m ³

Manifold Details	
S.draft to manifold	5,60 m
Rail to manifold	4,50 m
Bow to manifold	93,00 m

Tonnage Details	Gross	Net
International tonnage	23197 mt	12176 mt
Suez tonnage	23389 mt	20618 mt
Panama tonnage	23709 mt	18438 mt

Please note that figures above are given on average basis, Visit www.odfjell.com for ship specific details

Capacity of Cargo Tanks

Compartment	Volume 98%	St.St/ Coating	Tank Type	Pump Capacity	Heating Capacity
10CP	346	Stainless Steel	Cargo		100,00
10CS	346	Stainless Steel	Cargo		100,00
10WP	361	Stainless Steel	Cargo		100,00
10WS	361	Stainless Steel	Cargo		100,00
11WP	603	Stainless Steel	Cargo		100,00
11WS	603	Stainless Steel	Cargo		100,00
12C	1262	Stainless Steel	Cargo		100,00
12WP	608	Stainless Steel	Cargo		100,00
12WS	608	Stainless Steel	Cargo		100,00
13CP	590	Stainless Steel	Cargo		100,00
13CS	590	Stainless Steel	Cargo		100,00
13WP	560	Zinc	Cargo		100,00
13WS	560	Zinc	Cargo		100,00
14C	2305	Stainless Steel	Cargo		100,00
1CP	1188	Zinc	Cargo		100,00
1CS	1187	Zinc	Cargo		100,00
1DP	151	Stainless Steel	Cargo		100,00
1DS	151	Stainless Steel	Cargo		100,00
14WP	869	Zinc	Cargo		100,00
14WS	869	Zinc	Cargo		100,00
11CP	590	Stainless Steel	Cargo		100,00
11CS	590	Stainless Steel	Cargo		100,00
2C	2512	Stainless Steel	Cargo		100,00
2DP	151	Stainless Steel	Cargo		100,00
2DS	151	Stainless Steel	Cargo		100,00
2WP	976	Zinc	Cargo		100,00
2WS	976	Zinc	Cargo		100,00
3CP	295	Stainless Steel	Cargo		100,00
3CS	295	Stainless Steel	Cargo		100,00
3WP	289	Stainless Steel	Cargo		100,00
3WS	289	Stainless Steel	Cargo		100,00
4C	2527	Stainless Steel	Cargo		100,00
4WP	1224	Stainless Steel	Cargo		100,00
4WS	1224	Stainless Steel	Cargo		100,00
5CP	295	Stainless Steel	Cargo		100,00
5CS	295	Stainless Steel	Cargo		100,00
6C	2527	Stainless Steel	Cargo		100,00
6WP	1229	Stainless Steel	Cargo		100,00
6WS	1229	Stainless Steel	Cargo		100,00
8CP	293	Stainless Steel	Cargo		100,00
8CS	293	Stainless Steel	Cargo		100,00
8WP	314	Stainless Steel	Cargo		100,00
8WS	314	Stainless Steel	Cargo		100,00
9C	3067	Stainless Steel	Cargo		100,00
9WP	1459	Stainless Steel	Cargo		100,00
9WS	1459	Stainless Steel	Cargo		100,00
7CP	295	Stainless Steel	Cargo		100,00
7CS	295	Stainless Steel	Cargo		100,00
7WP	298	Stainless Steel	Cargo		100,00
7WS	298	Stainless Steel	Cargo		100,00
5WP	298	Stainless Steel	Cargo		100,00
5WS	298	Stainless Steel	Cargo		100,00
Total Center Tanks:	21983				
Total Wing Tanks:	18173				
Grand Total:	40760				

