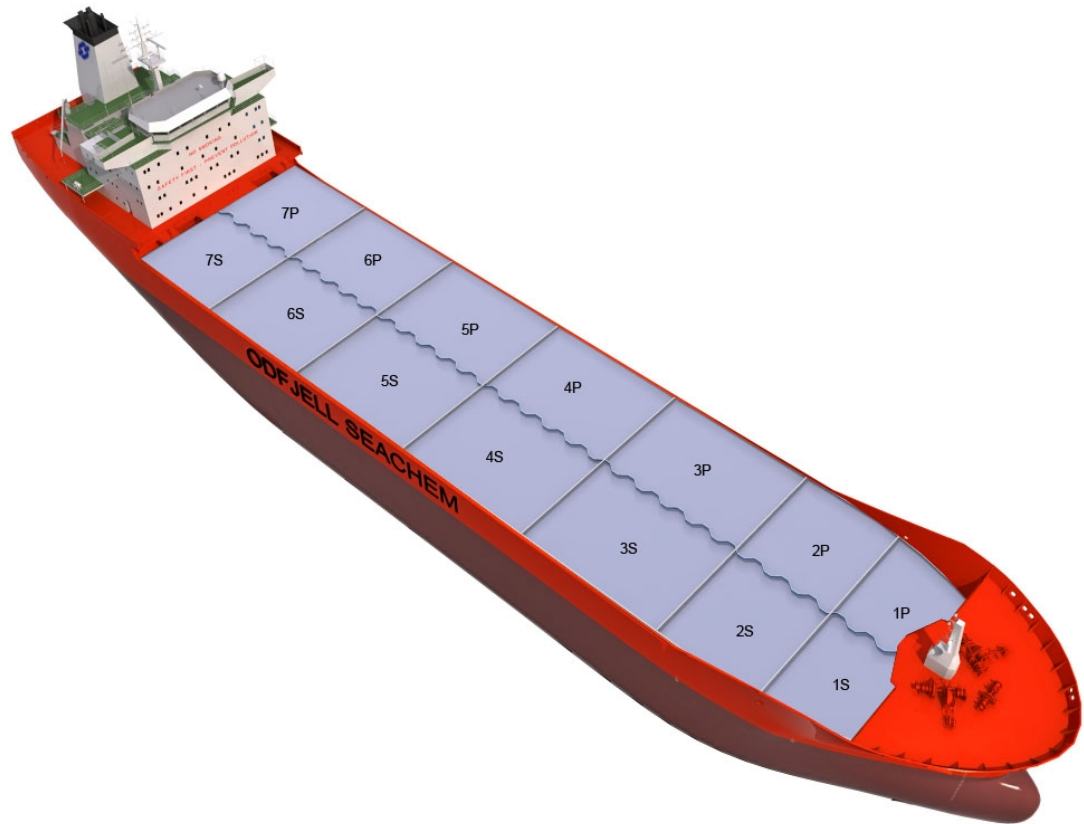


Ship Built



### Main Ship Particulars

Flag	Singapore
Classification	DNVER
# Tanks	14
L.O.A	103,60 m
Breadth	16,60 m
Draft S.Dwt	7,11 m
Keel to mast	35,19 m
Dwt (Summer)	6001 mt
Light ship	2947 mt
TPC S. Draft	15,0 t/cm
Speed	13,0 knots
N2 Capacity	
IGS System	
PO Capacity	
Parallel body length	
Laden Ballast	49,98 m
Norm Ballast	43,76 m
Num. of Segregations	14

Capacity Details (98%)	
St.Steel	6878 m <sup>3</sup>
Epoxy	
Zinc	

Manifold Details	
S.draft to manifold	
Rail to manifold	
Bow to manifold	48,50 m

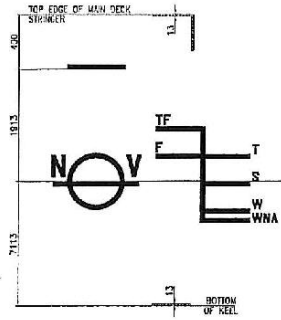
Tonnage Details	Gross	Net
International tonnage	4667 mt	1956 mt
Suez tonnage		
Panama tonnage		

Please note that figures above are given on average basis, Visit [www.odfjell.com](http://www.odfjell.com) for ship specific details

## Capacity of Cargo Tanks

Compartment	Volume 98%	St.St/ Coating	Tank Type	Pump Capacity	Heating Capacity
C1P	306	Stainless Steel	Cargo	200,00	65,00
C1S	306	Stainless Steel	Cargo	200,00	65,00
C2P	327	Stainless Steel	Cargo	200,00	65,00
C2S	327	Stainless Steel	Cargo	200,00	65,00
C3P	612	Stainless Steel	Cargo	200,00	65,00
C3S	619	Stainless Steel	Cargo	200,00	65,00
C4P	317	Stainless Steel	Cargo	200,00	65,00
C4S	324	Stainless Steel	Cargo	200,00	65,00
C5P	619	Stainless Steel	Cargo	200,00	65,00
C5S	625	Stainless Steel	Cargo	200,00	65,00
C6P	640	Stainless Steel	Cargo	200,00	65,00
C6S	640	Stainless Steel	Cargo	200,00	65,00
C7P	608	Stainless Steel	Cargo	200,00	65,00
C7S	608	Stainless Steel	Cargo	200,00	65,00
<b>Total Center Tanks:</b>	0				
<b>Total Wing Tanks:</b>	0				
<b>Grand Total:</b>	6878				

# Dead Weight Scale



	FREEBOARD Feet	DRAUGHT ft	DEADWEIGHT (T)	
			Fresh Water	Sea Water
TF - Tropical Fresh Water Load L	2015	7.411	6222	-
F - Fresh Water Load L	2163	7.263	6003	-
T - Tropical Load L	2165	7.261	6003	6224
S - Summer Load L	2313	7.113	5783	6007
W - Winter Load L	2461	6.965	5563	5779
WNA - Load L	2511	6.916	5483	5704

LIGHTSHIP DISPLACEMENT: 28471

Bow MARK

