

# BOW MEKKA

**KVAERNER1**

Chemical Tanker

Double/Single Hull: Double

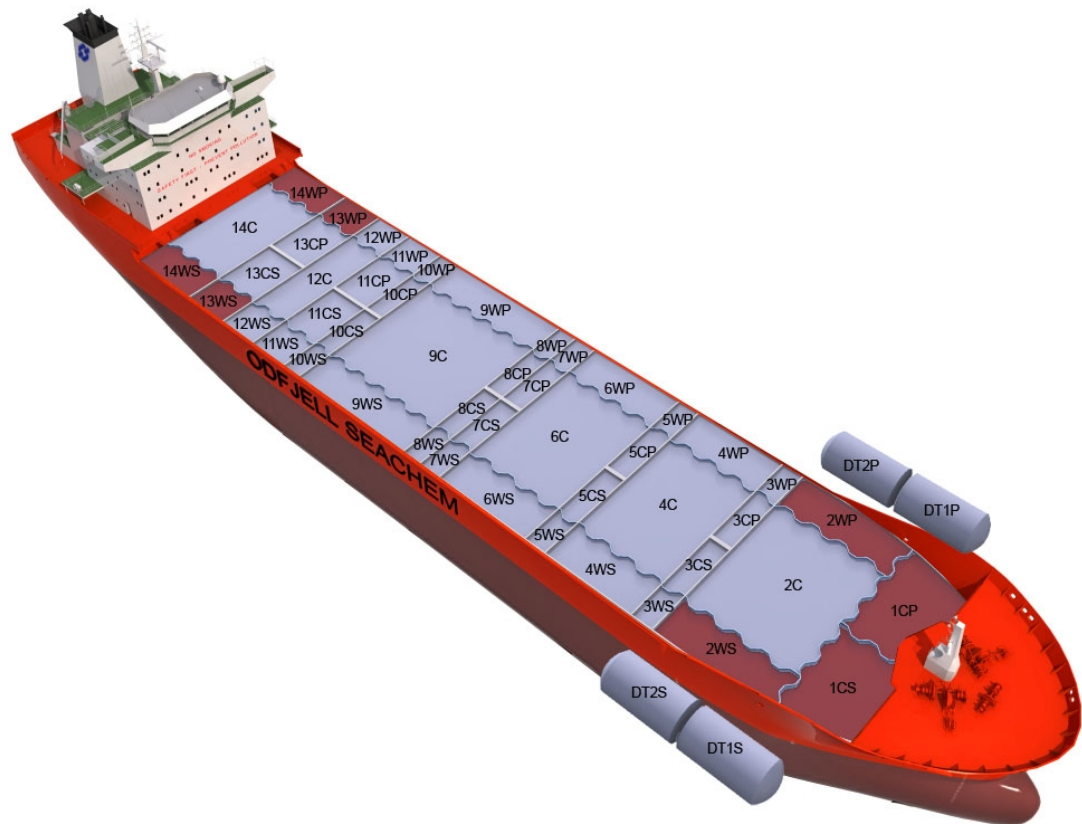
Owner: National Chemical C.

Technical Manager: Odfjell SE

Ship	Built
BOW FLOWER	1994
BOW RIYAD	1995
BOW CLIPPER	1995
BOW FAGUS	1995
BOW JUBAIL	1996
BOW CEDAR	1996
BOW FAITH	1997
BOW CARDINAL	1997

## Main Ship Particulars

<b>Flag</b>	NOR
<b>Classification</b>	DNVER
<b># Tanks</b>	52
<b>L.O.A</b>	183,10 m
<b>Breadth</b>	32,20 m
<b>Draft S.Dwt</b>	10,72 m
<b>Keel to mast</b>	43,05 m
<b>Dwt (Summer)</b>	37272 mt
<b>Light ship</b>	11226 mt
<b>TPC S. Draft</b>	50,2 t/cm
<b>Speed</b>	14,3 knots
<b>N2 Capacity</b>	5,0 m <sup>3</sup> /h
<b>IGS System</b>	2000,0 m <sup>3</sup> /h
<b>PO Capacity</b>	5000,0 m <sup>3</sup>
<b>Parallel body length</b>	64,60 m
<b>Laden Ballast</b>	77,60 m
<b>Norm Ballast</b>	71,10 m
<b>Num. of Segregations</b>	52



Capacity Details (98%)	
<b>St.Steel</b>	33572 m <sup>3</sup>
<b>Epoxy</b>	
<b>Zinc</b>	7184 m <sup>3</sup>

Manifold Details	
<b>S.draft to manifold</b>	5,60 m
<b>Rail to manifold</b>	4,50 m
<b>Bow to manifold</b>	93,00 m

Tonnage Details	Gross	Net
<b>International tonnage</b>	23197 mt	12176 mt
<b>Suez tonnage</b>	23389 mt	20616 mt
<b>Panama tonnage</b>	23481 mt	17622 mt

Please note that figures above are given on average basis, Visit [www.odfjell.com](http://www.odfjell.com) for ship specific details

Capacity of Cargo Tanks					
Compartment	Volume 98%	St.St/ Coating	Tank Type	Pump Capacity	Heating Capacity
11CP	590	Stainless Steel	Cargo		100,00
11CS	590	Stainless Steel	Cargo		100,00
3CP	295	Stainless Steel	Cargo		100,00
3CS	295	Stainless Steel	Cargo		100,00
3WP	289	Stainless Steel	Cargo		100,00
3WS	289	Stainless Steel	Cargo		100,00
4C	2527	Stainless Steel	Cargo		100,00
4WP	1224	Stainless Steel	Cargo		100,00
4WS	1224	Stainless Steel	Cargo		100,00
5CP	295	Stainless Steel	Cargo		100,00
5CS	295	Stainless Steel	Cargo		100,00
6C	2527	Stainless Steel	Cargo		100,00
6WP	1229	Stainless Steel	Cargo		100,00
6WS	1229	Stainless Steel	Cargo		100,00
7CP	295	Stainless Steel	Cargo		100,00
7CS	295	Stainless Steel	Cargo		100,00
7WP	298	Stainless Steel	Cargo		100,00
7WS	298	Stainless Steel	Cargo		100,00
8CP	293	Stainless Steel	Cargo		100,00
8CS	293	Stainless Steel	Cargo		100,00
8WP	314	Stainless Steel	Cargo		100,00
8WS	314	Stainless Steel	Cargo		100,00
9C	3067	Stainless Steel	Cargo		100,00
9WP	1459	Stainless Steel	Cargo		100,00
9WS	1459	Stainless Steel	Cargo		100,00
5WP	298	Stainless Steel	Cargo		100,00
5WS	298	Stainless Steel	Cargo		100,00
10CP	346	Stainless Steel	Cargo		100,00
10CS	346	Stainless Steel	Cargo		100,00
10WP	361	Stainless Steel	Cargo		100,00
10WS	361	Stainless Steel	Cargo		100,00
11WP	603	Stainless Steel	Cargo		100,00
11WS	603	Stainless Steel	Cargo		100,00
12C	1262	Stainless Steel	Cargo		100,00
12WP	608	Stainless Steel	Cargo		100,00
12WS	608	Stainless Steel	Cargo		100,00
13CP	590	Stainless Steel	Cargo		100,00
13CS	590	Stainless Steel	Cargo		100,00
13WP	560	Zinc	Cargo		100,00
13WS	560	Zinc	Cargo		100,00
14C	2305	Stainless Steel	Cargo		100,00
14WP	869	Zinc	Cargo		100,00
14WS	869	Zinc	Cargo		100,00
1CP	1188	Zinc	Cargo		100,00
1CS	1187	Zinc	Cargo		100,00
1DP	150	Stainless Steel	Cargo		100,00
1DS	150	Stainless Steel	Cargo		100,00
2C	2512	Stainless Steel	Cargo		100,00
2DP	150	Stainless Steel	Cargo		100,00
2DS	150	Stainless Steel	Cargo		100,00
2WP	976	Zinc	Cargo		100,00
2WS	976	Zinc	Cargo		100,00
<b>Total Center Tanks:</b>	21983				
<b>Total Wing Tanks:</b>	18173				
<b>Grand Total:</b>	40756				

