

# BOW OCTAVIA

Usuki 19-20

Chemical Tanker

Double/Single Hull: Double

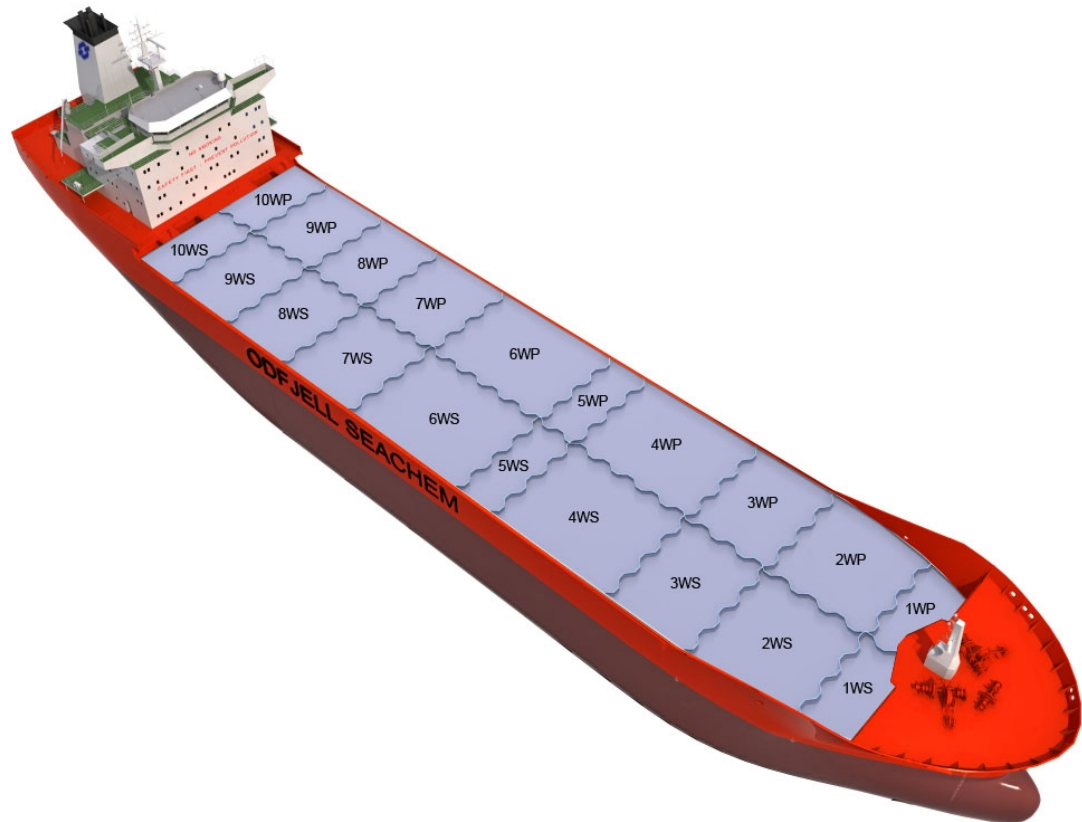
Owner: Sagana Shipping Inc

Technical Manager: Ahrenkiel

Ship	Built
BOW ORANIA	2006
BOW OPHELIA	2006
BOW FUJI	2006
BOW OLIVIA	2007
BOW OMARIA	2007
BOW ORELIA	2008
BOW CAPE	2008

## Main Ship Particulars

Flag	Phillipines
Classification	
# Tanks	20
L.O.A	145,53 m
Breadth	23,73 m
Draft S.Dwt	9,68 m
Keel to mast	37,24 m
Dwt (Summer)	19983 mt
Light ship	5210 mt
TPC S. Draft	28,8 t/cm
Speed	14,1 knots
N2 Capacity	
IGS System	
PO Capacity	
Parallel body length	
Laden Ballast	58,10 m
Norm Ballast	53,40 m
Num. of Segregations	20



Capacity Details (98%)	
St.Steel	22187 m <sup>3</sup>
Epoxy	
Zinc	

Manifold Details	
S.draft to manifold	
Rail to manifold	
Bow to manifold	73,43 m

Tonnage Details	Gross	Net
International tonnage	11561 mt	6052 mt
Suez tonnage		12213 mt
Panama tonnage		9727 mt

Please note that figures above are given on average basis, Visit [www.odfjell.com](http://www.odfjell.com) for ship specific details

## Capacity of Cargo Tanks

Compartment	Volume 98%	St.St/ Coating	Tank Type	Pump Capacity	Heating Capacity
1CP	640	Stainless Steel	Cargo		80,00
1CS	636	Stainless Steel	Cargo		80,00
2CP	1217	Stainless Steel	Cargo		80,00
2CS	1216	Stainless Steel	Cargo		80,00
3CP	1760	Stainless Steel	Cargo		80,00
3CS	1760	Stainless Steel	Cargo		80,00
4CP	1165	Stainless Steel	Cargo		80,00
4CS	1172	Stainless Steel	Cargo		80,00
5CP	629	Stainless Steel	Cargo		80,00
5CS	629	Stainless Steel	Cargo		80,00
6CP	1171	Stainless Steel	Cargo		80,00
6CS	1166	Stainless Steel	Cargo		80,00
7CP	1887	Stainless Steel	Cargo		80,00
7CS	1894	Stainless Steel	Cargo		80,00
8CP	1344	Stainless Steel	Cargo		80,00
8CS	1343	Stainless Steel	Cargo		80,00
9CP	685	Stainless Steel	Cargo		80,00
9CS	691	Stainless Steel	Cargo		80,00
10CP	592	Stainless Steel	Cargo		80,00
10CS	590	Stainless Steel	Cargo		80,00
<b>Total Center Tanks:</b>	22187				
<b>Total Wing Tanks:</b>	0				
<b>Grand Total:</b>	22187				

## Dead Weight Scale

