

BOW QUERIDA

QUERIDA

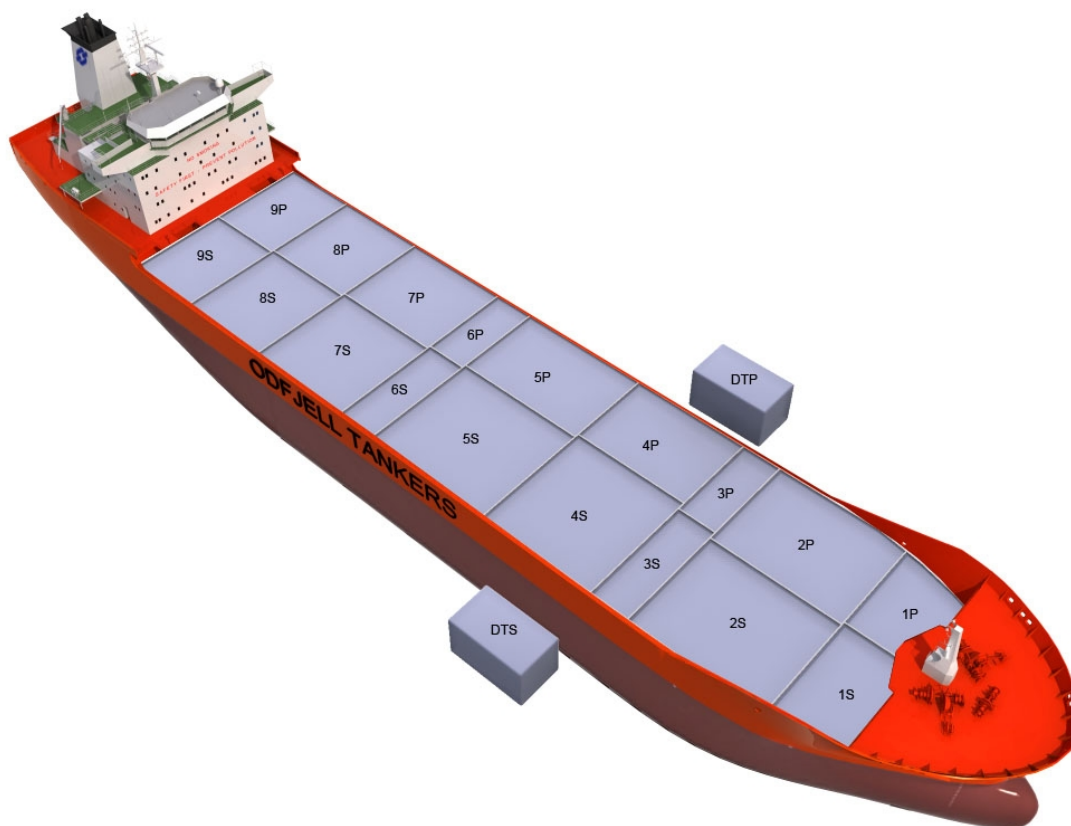
Chemical Tanker

Double/Single Hull: Double

Owner: Odfjell Asia II Pte

Technical Manager: Odfjell SE

Ship Built



Main Ship Particulars

Flag	Singapore
Classification	DNVER
# Tanks	20
L.O.A	126,72 m
Breadth	19,03 m
Draft S.Dwt	7,80 m
Keel to mast	35,00 m
Dwt (Summer)	10106 mt
Light ship	3780 mt
TPC S. Draft	20,5 t/cm
Speed	12,5 knots
N2 Capacity	
IGS System	
PO Capacity	
Parallel body length	59,00 m
Laden Ballast	80,00 m
Norm Ballast	67,00 m
Num. of Segregations	20

Capacity Details (98%)

St.Steel	10957 m ³
Epoxy	
Zinc	

Manifold Details

S.draft to manifold	4,30 m
Rail to manifold	5,00 m
Bow to manifold	62,00 m

Tonnage Details

	Gross	Net
International tonnage	6737 mt	3242 mt
Suez tonnage	5610 mt	5610 mt
Panama tonnage	5700 mt	

Please note that figures above are given on average basis, Visit www.odfjell.com for ship specific details

Capacity of Cargo Tanks

Compartment	Volume 98%	St.St/ Coating	Tank Type	Pump Capacity	Heating Capacity
1CP	536	Stainless Steel	Cargo		100,00
1CS	536	Stainless Steel	Cargo		100,00
2CP	852	Stainless Steel	Cargo		100,00
2CS	852	Stainless Steel	Cargo		100,00
3CP	207	Stainless Steel	Cargo		100,00
3CS	207	Stainless Steel	Cargo		100,00
4CP	879	Stainless Steel	Cargo		100,00
4CS	879	Stainless Steel	Cargo		100,00
5CP	931	Stainless Steel	Cargo		100,00
5CS	931	Stainless Steel	Cargo		100,00
6CP	207	Stainless Steel	Cargo		100,00
6CS	207	Stainless Steel	Cargo		100,00
7CP	621	Stainless Steel	Cargo		100,00
7CS	621	Stainless Steel	Cargo		100,00
8CP	620	Stainless Steel	Cargo		100,00
8CS	620	Stainless Steel	Cargo		100,00
9CP	527	Stainless Steel	Cargo		100,00
9CS	527	Stainless Steel	Cargo		100,00
1DP	98	Stainless Steel	Cargo		100,00
1DS	98	Stainless Steel	Cargo		100,00
Total Center Tanks:	10761				
Total Wing Tanks:	0				
Grand Total:	10957				

Dead Weight Scale

SCALA DI SOLIDITA'					
MOMENTO UNITARIO DI ASSETTO (t x m)	DISLOCAMENTO UNITARIO (t)	DISLOCAMENTO (t)	IMMERSIONE (m)	PORTATA LORDA	
				ACQUA MARE (t)	ACQUA DOLCE (t)
180.0	21.0	16000	8.5	12000	12000
		15500			11000
180.0	20.5	15000	8.0	11000	10000
		14500			10000
170.0	20.0	14000	7.5	10000	9000
		13500			9000
160.0	19.5	13000	7.0	9000	8000
		12500			8000
150.0	19.0	12000	6.5	8000	7000
		11500			7000
140.0	18.5	11000	6.0	7000	6000
		10500			6000
130.0	18.0	10000	5.5	6000	5000
		9500			5000
120.0	17.5	9000	5.0	5000	4000
		8500			4000
110.0	17.0	8000	4.5	4000	3000
		7500			3000
	16.5	7000	4.0	3000	2000
		6500			2000
	16.0	6000	3.5	2000	1000
		5500			1000
	15.5	5000	3.0	1000	0
		4500			0
	15.0	4000	2.5	0	0
		3500			0
	14.5	3000	2.0	0	0