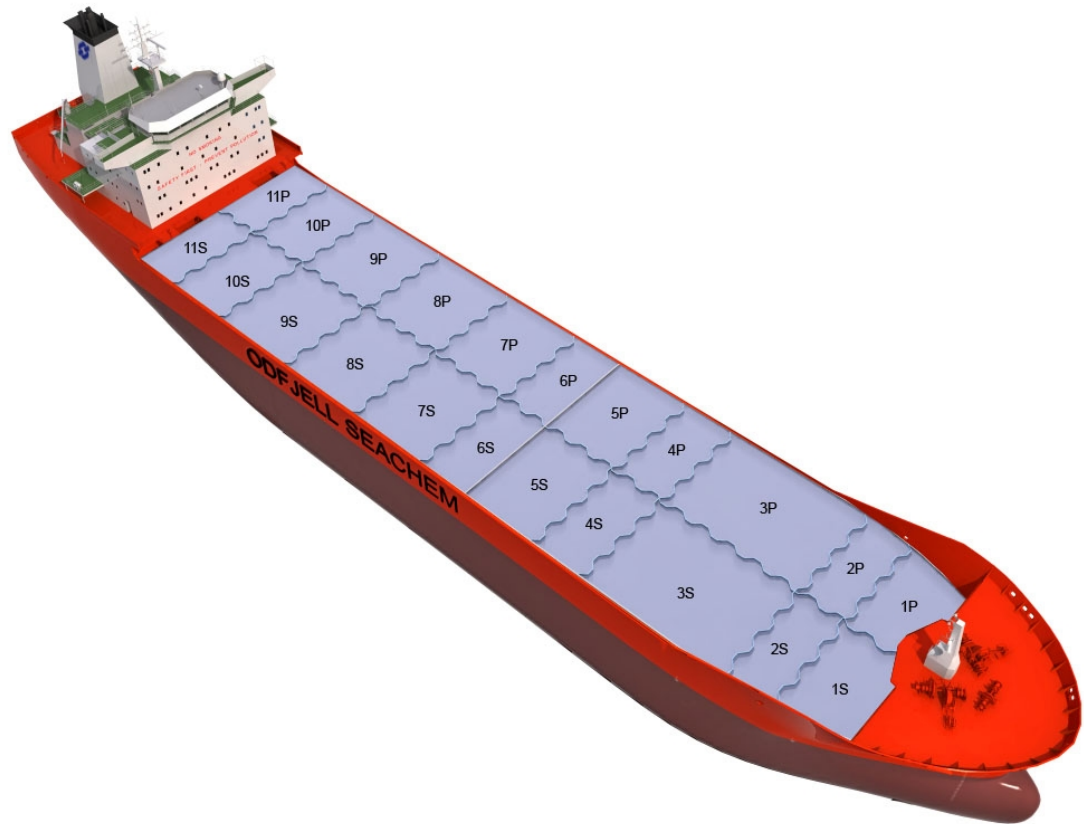


BOW RIO

110 000 DWT TANKS
CP10

Chemical Tanker
 Double/Single Hull: Double
 Owner: Unknown
 Technical Manager: Executive Shipmanagement Pte Ltd

Ship	Built
BOW SANTOS	2004



Main Ship Particulars

Flag	Hong Kong
Classification	NKK
# Tanks	22
L.O.A	147,83 m
Breadth	24,23 m
Draft S.Dwt	9,42 m
Keel to mast	32,97 m
Dwt (Summer)	19999 mt
Light ship	
TPC S. Draft	30,1 t/cm
Speed	14,1 knots
N2 Capacity	0,0 m ³ /h
IGS System	0,0 m ³ /h
PO Capacity	0,0 m ³
Parallel body length	
Laden Ballast	54,78 m
Norm Ballast	45,41 m
Num. of Segregations	22

Capacity Details (98%)	
St.Steel	21409 m ³
Epoxy	
Zinc	

Manifold Details	
S.draft to manifold	4,35 m
Rail to manifold	5,25 m
Bow to manifold	74,63 m

Tonnage Details	Gross	Net
International tonnage	11986 mt	6014 mt
Suez tonnage	12534 mt	10290 mt
Panama tonnage		10079 mt

Please note that figures above are given on average basis, Visit www.odfjell.com for ship specific details

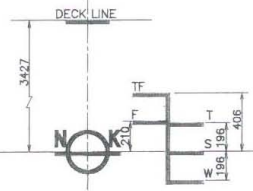
Capacity of Cargo Tanks

Compartment	Volume 98%	St.St/ Coating	Tank Type	Pump Capacity	Heating Capacity
10CP	704	Stainless Steel	Cargo		80,00
10CS	704	Stainless Steel	Cargo		80,00
11CP	608	Stainless Steel	Cargo		80,00
11CS	608	Stainless Steel	Cargo		80,00
1CP	642	Stainless Steel	Cargo		80,00
1CS	642	Stainless Steel	Cargo		80,00
2CP	403	Stainless Steel	Cargo		80,00
2CS	411	Stainless Steel	Cargo		80,00
3CP	1595	Stainless Steel	Cargo		80,00
3CS	1604	Stainless Steel	Cargo		80,00
4CP	672	Stainless Steel	Cargo		80,00
4CS	672	Stainless Steel	Cargo		80,00
5CP	1361	Stainless Steel	Cargo		80,00
5CS	1350	Stainless Steel	Cargo		80,00
6CP	674	Stainless Steel	Cargo		80,00
6CS	674	Stainless Steel	Cargo		80,00
7CP	1349	Stainless Steel	Cargo		80,00
7CS	1360	Stainless Steel	Cargo		80,00
8CP	1349	Stainless Steel	Cargo		80,00
8CS	1361	Stainless Steel	Cargo		80,00
9CP	1326	Stainless Steel	Cargo		80,00
9CS	1338	Stainless Steel	Cargo		80,00
Total Center Tanks:	21409				
Total Wing Tanks:	0				
Grand Total:	21409				

Dead Weight Scale

BOW RIO - SHIN-KURUSHIMA SNO 5316 - Delivered 18 November 2005

DEADWEIGHT SCALE							
FRESH WATER		DRAFT	SALT WATER		FREE-BOARD	SALT WATER	
DISPLA- CEMENT	DEAD- WEIGHT		DISPLA- CEMENT	DEAD- WEIGHT		MT-M	TPC
MT	MT	M	MT	MT	M	MT-M	MT
	21000	10	27000	22000	3	280	
26000				21000		285	
	20000		26000				
25000				20000		280	
	19000		25000				30
24000				19000		275	
	18000	9	24000		4	270	
23000				18000		265	
	17000		23000				
22000				17000		260	
	16000		22000			255	
21000				16000			29
	15000	8	21000		5	250	
20000				15000		245	
	14000		20000				
19000				14000		240	
	13000		19000				
18000		7		13000		235	
	12000		18000		6		
17000				12000		230	28
	11000		17000				
16000				11000		225	
	10000	6	16000		7		
15000				10000		220	
	9000		15000				
14000				9000			
	8000		14000				
13000				8000			
	7000	5	13000		8	215	
12000				7000			
	6000		12000				
11000				6000			
	5000		11000				
10000		4		5000			27
	4000		10000		9		
9000				4000			
	3000		9000			205	
8000				3000			
	2000	3	8000				
7000				2000			
	1000		7000		10	200	
6000				1000			
	0		6000			195	
5000		2		0			26
			5000			190	



SUMMER DRAFT 9.417 M
DEADWEIGHT 19999 MT