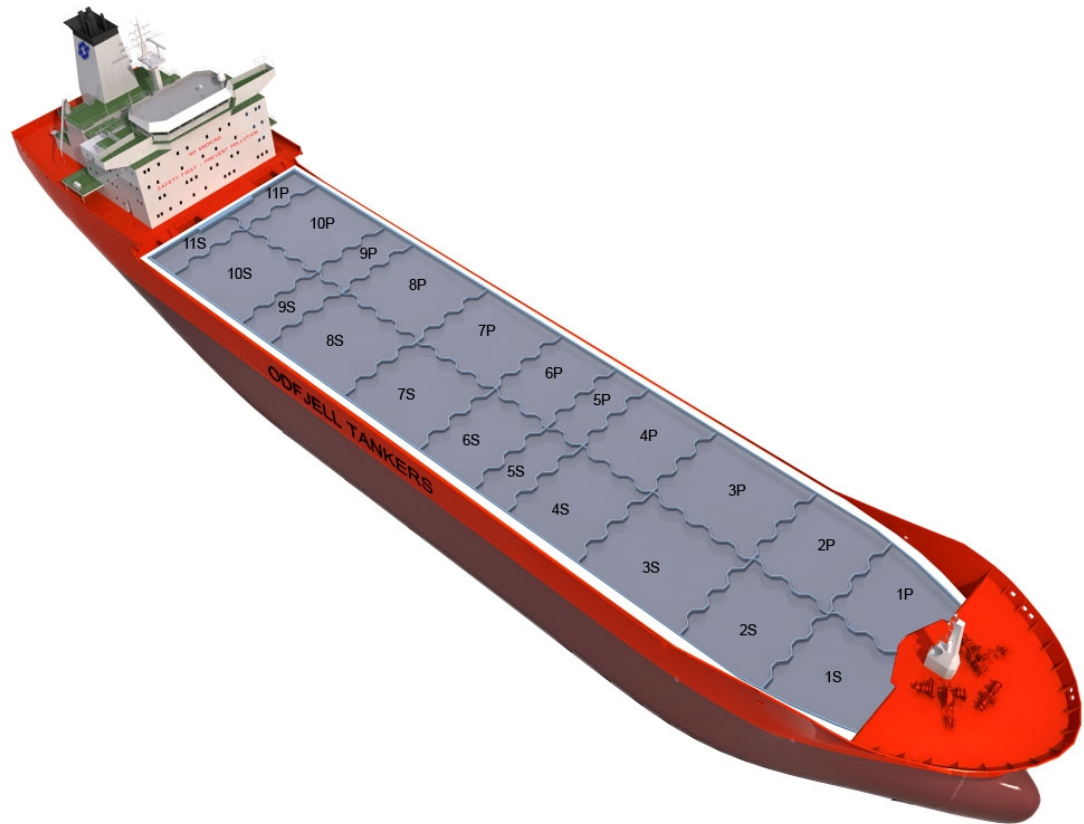


Ship Built



Main Ship Particulars

Flag	Panama
Classification	NKK
# Tanks	22
L.O.A	123,19 m
Breadth	20,02 m
Draft S.Dwt	8,75 m
Keel to mast	33,87 m
Dwt (Summer)	12503 mt
Light ship	3396 mt
TPC S. Draft	21,0 t/cm
Speed	12,5 knots
N2 Capacity	
IGS System	
PO Capacity	
Parallel body length	
Laden Ballast	64,41 m
Norm Ballast	51,09 m
Num. of Segregations	22

Capacity Details (98%)	
St.Steel	13292 m ³
Epoxy	
Zinc	

Manifold Details	
S.draft to manifold	
Rail to manifold	
Bow to manifold	61,59 m

Tonnage Details	Gross	Net
International tonnage	6843 mt	3851 mt
Suez tonnage	6435 mt	
Panama tonnage	5804 mt	

Please note that figures above are given on average basis, Visit www.odfjell.com for ship specific details

Capacity of Cargo Tanks

Compartment	Volume 98%	St.St/ Coating	Tank Type	Pump Capacity	Heating Capacity
C1P	472	Stainless Steel	Cargo		
C1S	472	Stainless Steel	Cargo		
C2P	578	Stainless Steel	Cargo		
C2S	578	Stainless Steel	Cargo		
C3P	872	Stainless Steel	Cargo		
C3S	879	Stainless Steel	Cargo		
C4P	664	Stainless Steel	Cargo		
C4S	672	Stainless Steel	Cargo		
C5P	333	Stainless Steel	Cargo		
C5S	333	Stainless Steel	Cargo		
C6P	556	Stainless Steel	Cargo		
C6S	556	Stainless Steel	Cargo		
C7P	831	Stainless Steel	Cargo		
C7S	838	Stainless Steel	Cargo		
C8P	886	Stainless Steel	Cargo		
C9S	331	Stainless Steel	Cargo		
C8S	894	Stainless Steel	Cargo		
C9P	331	Stainless Steel	Cargo		
C10P	844	Stainless Steel	Cargo		
C10S	852	Stainless Steel	Cargo		
C11P	260	Stainless Steel	Cargo		
C11S	260	Stainless Steel	Cargo		
Total Center Tanks:	0				
Total Wing Tanks:	0				
Grand Total:	13292				

Dead Weight Scale

