

BOW ATLANTIC

BRAGE

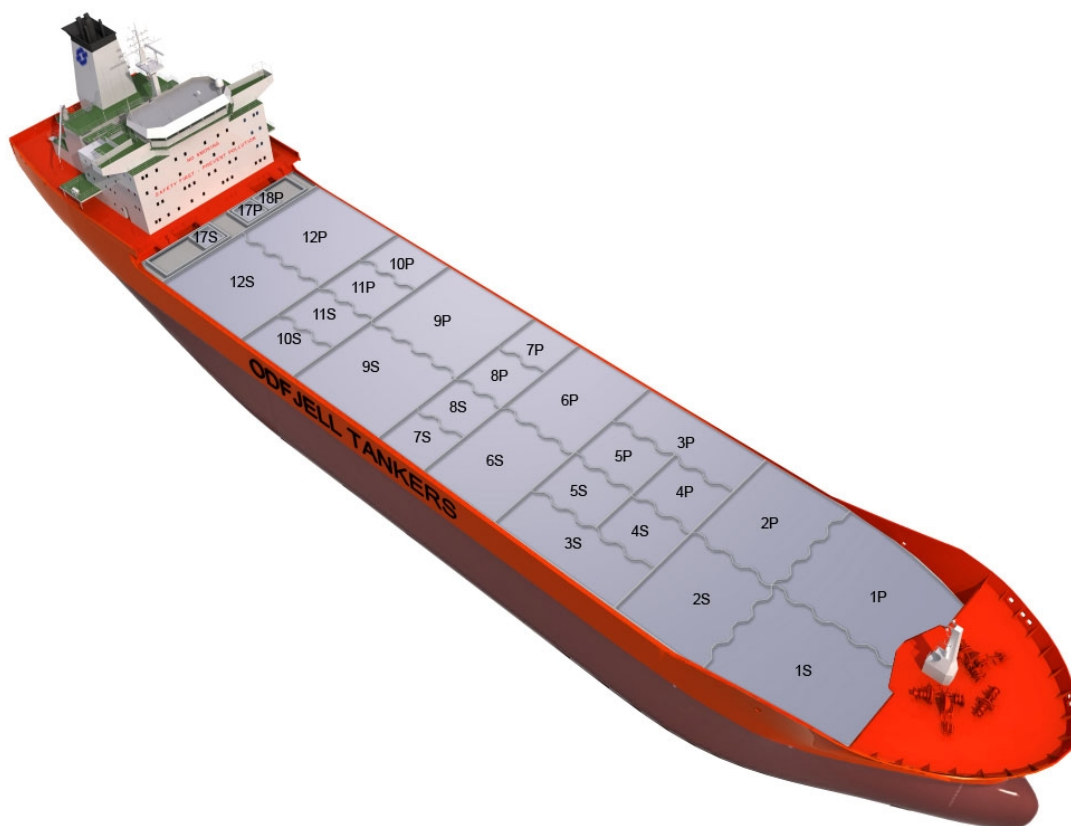
Chemical Tanker

Double/Single Hull: Double

Owner: Odfjell Asia II Pte

Technical Manager: Odfjell Ship Management

Ship	Built
BOW OCEANIC	1997



Main Ship Particulars

Flag	Singapore
Classification	DNVER
# Tanks	24
L.O.A	142,40 m
Breadth	22,80 m
Draft S.Dwt	9,72 m
Keel to mast	37,50 m
Dwt (Summer)	17460 mt
Light ship	5803 mt
TPC S. Draft	27,6 t/cm
Speed	13,6 knots
N2 Capacity	0,0 m ³ /h
IGS System	0,0 m ³ /h
PO Capacity	5529,0 m ³
Parallel body length	51,50 m
Laden Ballast	78,00 m
Norm Ballast	68,00 m
Num. of Segregations	24

Capacity Details (98%)	
St.Steel	19223 m ³
Epoxy	
Zinc	

Manifold Details	
S.draft to manifold	6,36 m
Rail to manifold	4,90 m
Bow to manifold	78,00 m

Tonnage Details	Gross	Net
International tonnage	10369 mt	5541 mt
Suez tonnage	10839 mt	10 mt
Panama tonnage	8740 mt	

Please note that figures above are given on average basis, Visit www.odfjell.com for ship specific details

Capacity of Cargo Tanks

Compartment	Volume 98%	St.St/ Coating	Tank Type	Pump Capacity	Heating Capacity
1S	973	Stainless Steel	Cargo		100,00
2P	1073	Stainless Steel	Cargo		100,00
2S	1055	Stainless Steel	Cargo		100,00
3P	753	Stainless Steel	Cargo		100,00
3S	753	Stainless Steel	Cargo		100,00
4P	430	Stainless Steel	Cargo		100,00
4S	419	Stainless Steel	Cargo		100,00
5P	430	Stainless Steel	Cargo		100,00
5S	419	Stainless Steel	Cargo		100,00
6P	1071	Stainless Steel	Cargo		100,00
6S	1069	Stainless Steel	Cargo		100,00
7P	290	Stainless Steel	Cargo		100,00
7S	290	Stainless Steel	Cargo		100,00
8P	335	Stainless Steel	Cargo		100,00
8S	334	Stainless Steel	Cargo		100,00
9P	1516	Stainless Steel	Cargo		100,00
9S	1516	Stainless Steel	Cargo		100,00
10P	591	Stainless Steel	Cargo		100,00
10S	591	Stainless Steel	Cargo		100,00
11P	652	Stainless Steel	Cargo		100,00
11S	663	Stainless Steel	Cargo		100,00
1P	970	Stainless Steel	Cargo		100,00
12P	1512	Stainless Steel	Cargo		100,00
12S	1518	Stainless Steel	Cargo		100,00
Total Center Tanks:	15956				
Total Wing Tanks:	3267				
Grand Total:	19223				

